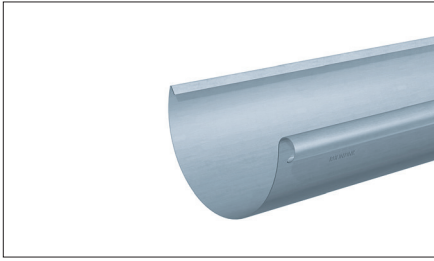


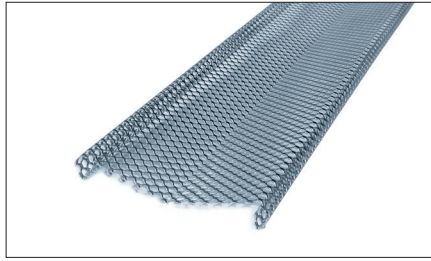


GUTTER SYSTEMS

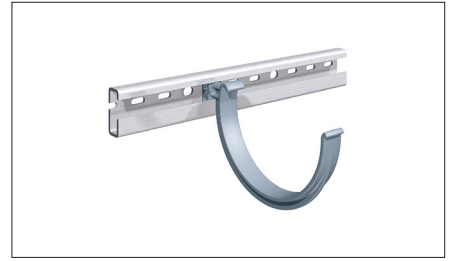
Gutters, Downspouts and Accessories



Half Round Gutter
5" and 6" in 9.84' (3m) lengths
in blue-grey and 6" in graphite-grey *



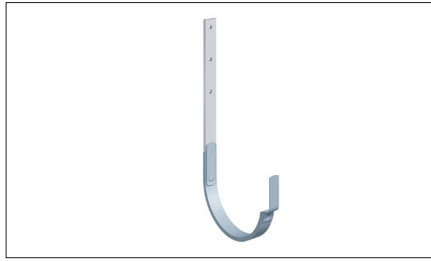
Leaf Guard
Bright rolled for half round gutters,
6.5' lengths



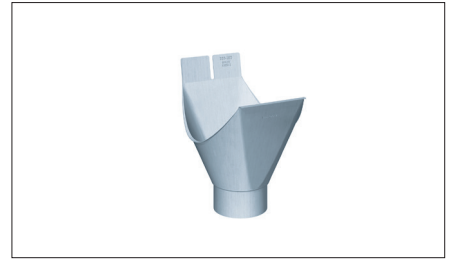
Snap-Lock Bracket System
Extruded aluminum mounting rail,
9' - 10" lengths, powder coated aluminum bracket



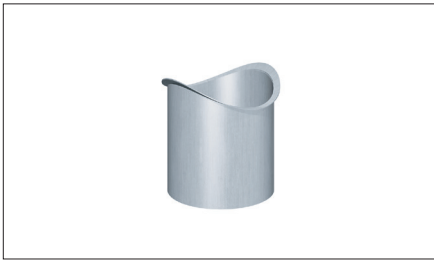
Fascia Hanger



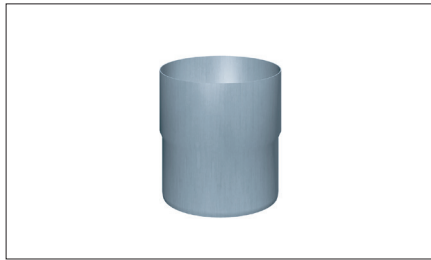
Gutter Bracket
Sheathed in prePATINA blue-grey or pre-PATINA graphite-grey.



Plug in Outlet, welded



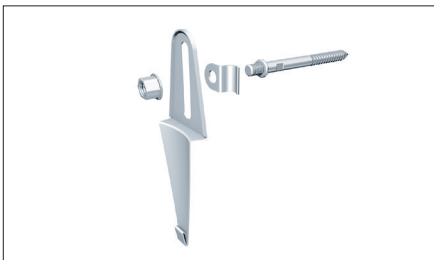
Drop In Outlet, welded



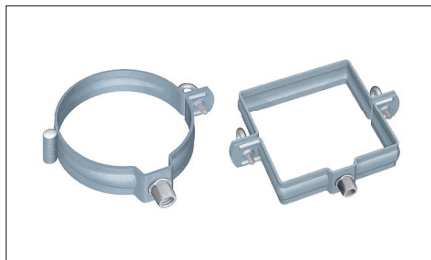
Downspout Adapter, welded



Elbows 60° and 72°
Patented high-frequency welded



Hidden Downspout Hanger
With concealed lightning rod clip



Downspout Bracket
Solid zinc



Elbows 60° and 72°
Patented high-frequency welded

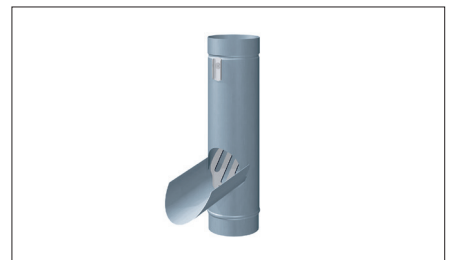


Square Downspout

* Please note: Other sizes are available upon request



Downspout
Plain round, patented high-frequency welded, 3-1/8", 4" and 5"*



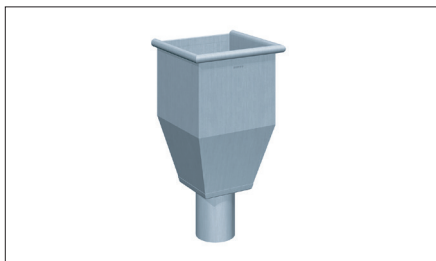
Leaf Collector and Rainwater Diverter
With removable leaf screen



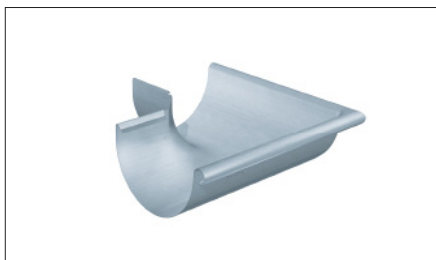
End Cap
Left and right



Spherical End Caps
Universal



Leader Head, square



Miter
Seamless, inside and outside



DrainTile Extension
Sleeve with drain tile flange cover



The Trademark for Quality in Roof Drainage

The design and extensive assortment of components and accessories make the RHEINZINK Gutter System adaptable to virtually any roof configuration.

Half Round or Box-shaped gutters, RHEINZINK manufactures over 300 parts and accessories. All gutter components are fabricated with high quality available in RHEINZINK-prePATINA blue-grey and prePATINA graphite-grey finishes.

RHEINZINK complies with the strictest environmental standards and is infinitely recyclable. The material RHEINZINK has been able to claim the title "sustainable", from production all the way to its permanent application, for over 40 years. In fact, RHEINZINK products provide an opportunity for LEED projects. Following comprehensive evaluation of its complete life cycle, it has been certified as an environmentally friendly building product by Cradle to Cradle and by ISO as a 14025, Type III product.

RHEINZINK meets ASTM B-69-21 Types 1 and 2 for Architectural Rolled Zinc. Type 1 is for blue-grey and Type 2 is for graphite grey zinc. Currently, RHEINZINK is the only manufacturer with a Type 2 designation.

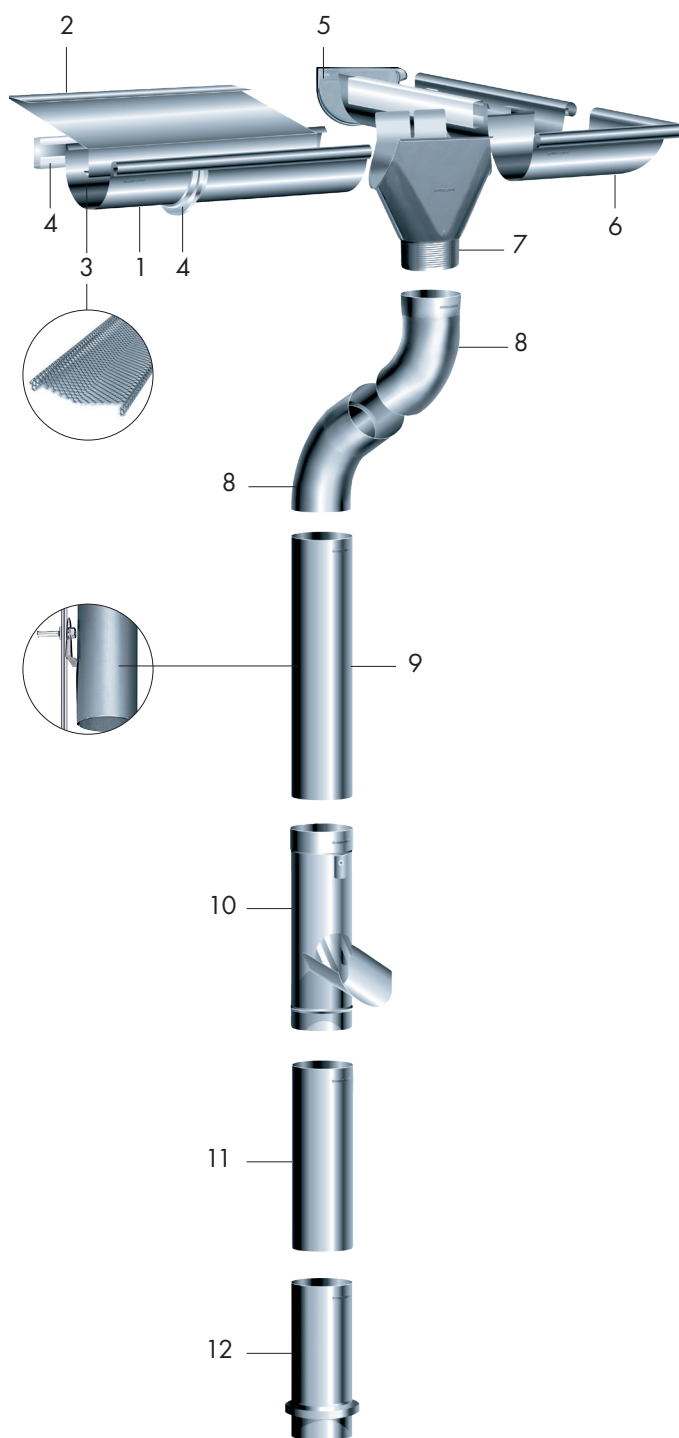


Quality Characteristics

A decision to use RHEINZINK is a decision in favor of high-quality. As an unmistakable sign of its origin and authenticity, each RHEINZINK component is stamped with the company name. With this stamp is an endorsement of quality for years to come.

For detailed information regarding the possible LEED points that may be achieved when RHEINZINK is employed on a building, please check into the world of zinc at www.rheinzink.us





Example

- 1 Half Round Gutter *
- 2 Drip Edge
- 3 Leaf Guard
- 4 Snap-Lock Bracket System
- 5 End Cap
- 6 Miter
- 7 Plug in Outlet
- 8 Elbow
- 9 Hidden Downspout Hanger
with concealed lightning rod clip
- 10 Leaf Collector and
Rainwater Diverter
with removeable leaf screen
- 11 Downspout
- 12 Drantile Extension

* Not all accessories are available in box gutters and square downspouts.