



# ROOFING

System Solutions for Roofs

## Foreword

If materials limit creativity, what good are they? And, if your design cannot become a reality, then what good is it? If a manufacturer can't provide sound technical advisement on their products, what good are they?

RHEINZINK offers a solution to all of the above. RHEINZINK is known as one of the industry's most reliable and trusted brands for roofing and façade cladding. Our customers are supported by unparalleled customer service and technical assistance.

Along with our partners, we offer unique solutions for virtually every design. A comprehensive range of RHEINZINK facade and roofing products, along with diverse installation techniques, facilitate solutions for every project.

RHEINZINK's aesthetic is timeless. Additionally, requirements for sustainable building using natural materials are met without difficulty. RHEINZINK is low-to-no maintenance and can last for generations.

The examples in this brochure illustrate some of the design possibilities when utilizing RHEINZINK.

RHEINZINK reserves the right to make changes or adjustments based on research and development. For questions pertaining to any system, please contact our Technical Department.

Woburn, March 2021





Private Residence, Moskauer Gebiet, Russia



Chengdu Luxelakes ECO City EOD,  
Chengdu, China



Garden of Gethsemane, Roxbury, MA,  
USA

## RHEINZINK-Double Lock Standing Seam

The double lock standing seam is a further development of the original hollow, folded joint or angle standing seam. This reliable system has been referenced in technical literature since 1899 and is a great choice for roof pitches greater than 5/8 : 12. The double lock standing seam, manufactured with pre-profiled panels, has gained international recognition. Seams are folded and closed manually or with a seaming machine. Custom shapes such as convex and concave curves and conical panels can be produced with ease. Thanks to a multitude of detail variations, the double standing seam complements both traditional and modern architectural design.

- Time-proven system
- High degree of design freedom
- Roof-integrated solar solutions and snow retention systems possible



Fig. Cover page: Private Residence, Toronto, ON, Canada  
Fig. Left: Vaughan TTC, Vaughan, ON, Canada



*Kastell, Gbeľany, Slovakia*



*Rosevia Resort, Jastrzębia Góra*

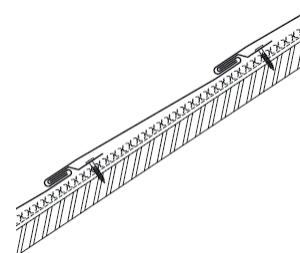
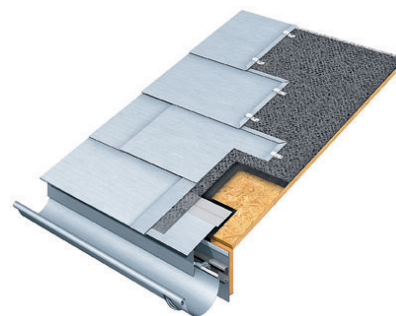


*Wohnhaus, Rangsdorf, Germany*

## RHEINZINK-Tiles

Tiles have gained popularity for roofing. Unlike sheets or shingles of similar appearance, these have forward bent edges along the lower surface to form simple interlocking joints. Diamond, Rectangular and Square-shaped tiles provide aesthetically pleasing solutions, especially for geometrically complicated building designs with roof pitches greater than 3:12.

- Individual tile sizes
- Perfect for curvilinear surfaces
- Diamond, Rectangular and Square





*Hotel Boat & Co., Amsterdam, The Netherlands*



*Private Residence, Ratingen, Germany*



*Chengdu Luxelakes ECO City EOD, Chengdu, China*

### RHEINZINK-Standing Seam Panels

The angled standing seam is completed simply by folding in one leg. This system is particularly suitable for areas on metal roofs where the pitch is greater than 6 : 12 roof pitch, as well as for rounded parapets or mansard roofs – in a conventional vertical, diagonal or horizontal application. This profiles seam is wider than that of the Double Lock and can cast a distinct shadow line.

- Design with distinct lines
- Low-to-no maintenance
- Roof-integrated solar solutions and snow retention systems possible





Christ Church Cathedral, Vancouver, BC, Canada



Church in The Netherlands



Hochschule für bildende Künste, Dresden, Germany

### RHEINZINK-Click Roll Cap

The roll cap system with battens is one of the more traditional of today's prevailing sheet metal work techniques. The term roll cap or batten seam characterizes a type of lengthwise connection in which a wooden batten or a RHEINZINK clip made of galvanized steel is used to form a box-like joint. The roof panels are connected to the substrate by clips on the wooden batten (or directly by the clip), which is then covered by a cap. A wealth of design possibilities exist when the roll cap is combined with standing seam panels.

- Traditional wide-seamed application
- Panel lengths of up to 60' possible
- Alternative to Double Lock Standing Seam

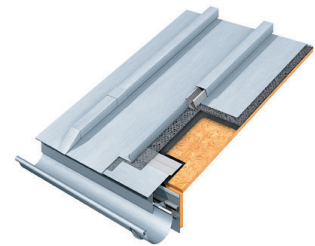


Fig. Right: Brazilian Embassy, Moscow, Russia







**ONE BRAND –  
5 PRODUCT LINES**

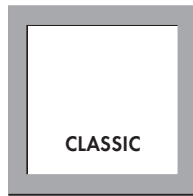
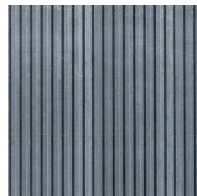
**THE PERFECT  
SOLUTION  
FOR EVERY  
REQUIREMENT**

bright rolled



### RHEINZINK-CLASSIC

*ORIGINAL.  
EXPRESSIVE.  
PATINATES OVER TIME.*



TITANIUM ZINC BRIGHT ROLLED:  
PATINATES OVER THE YEARS. NATU-  
RAL, VARIABLE SURFACE CHARACTER.

blue-grey



graphite-grey



### RHEINZINK-prePATINA

*PRE-WEATHERED.  
SELF-HEALING.  
NATURAL.*

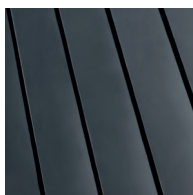
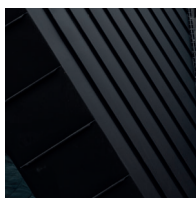
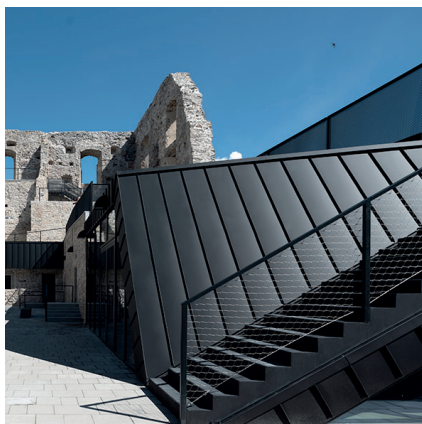


THE ONLY NATURALLY PRE-WEA-  
THERED SURFACE IN THE WORLD.  
ZINC TYPICAL PATINA EX WORKS.  
100% NATURAL, 100% RECYCLABLE.

- skygrey
- basalte

## RHEINZINK-GRANUM

NOBLE.  
MATTE FINISH.  
MULTIFACETED.

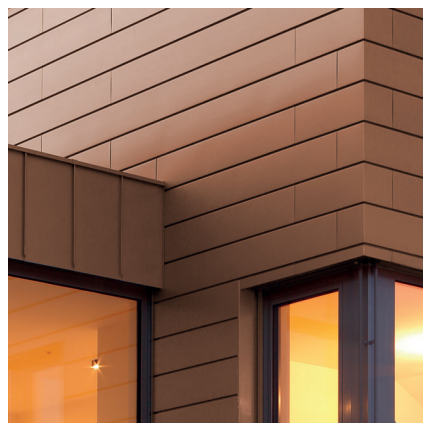
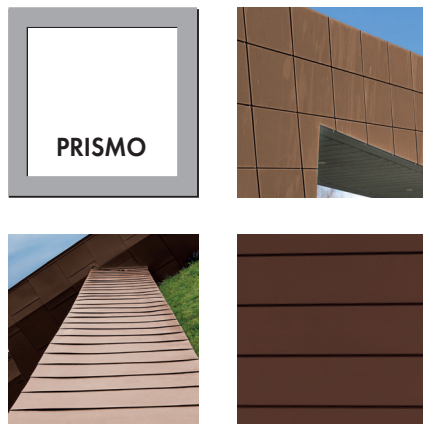


SKYGREY AND BASALTE. PURE, GREY ELEGANCE. URBAN DESIGN. PHOSPHATED SURFACE WITH COUNTLESS DESIGN OPPORTUNITIES.

- gold
- brown
- blue
- red
- green
- black

## RHEINZINK-PRISMO

GLAZED.  
DYNAMIC.  
ADAPTABLE.

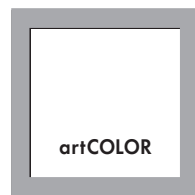
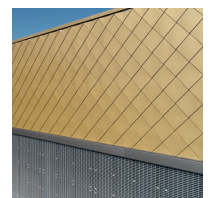
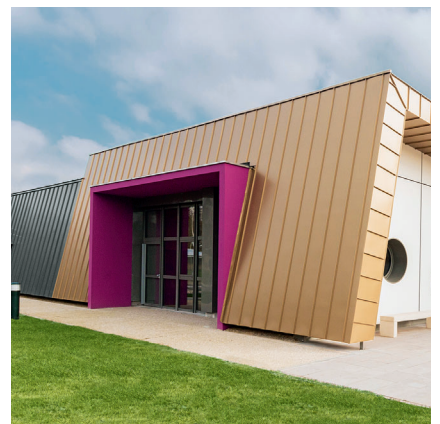


AESTHETIC, HARMONIOUS MATCH WITH ITS SURROUNDINGS. SUBTLE COLOUR VARIETY FOR A UNIQUE LOOK. SEMI-TRANSPARENT.

- pure-white
- pearl-gold
- moss-green
- nut-brown
- blue
- tile-red
- black-grey

## RHEINZINK-artCOLOR

COLORFUL.  
LIVELY.  
CREATIVE.



CREATIVE DESIGN POSSIBILITIES. INDIVIDUAL, EXPRESSIVE COLOR COMPOSITIONS. COATED COLOR VARIETY.



RHEINZINK America, Inc.  
96F Commerce Way  
Woburn, MA 01801  
USA

Tél. : +1 781 729 0812  
Télééc. : +1 781 729 0813

[info@rheinzipnk.com](mailto:info@rheinzipnk.com)  
[www.rheinzipnk.us](http://www.rheinzipnk.us)