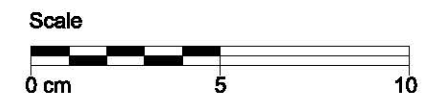


- 04 RHEINZINK-Angled Standing Seam Facade,
- 16 RHEINZINK-Building Profile
 - e Receiver strip, with sealant tape
 - g Lintel profile - partly perforated
- 18 Support Profile
 - a Galvanised steel
- 19 Separating Layer
 - d Breather membrane
- 20 Substructure
 - h WBP plywood or OSB Grade 3
Min. 18mm thick
- 21 Batten/ Squared Timber
 - Batten
 - Squared Timber
- 23 Supporting Structure
- 25 Thermal insulation
- 30 Ventilated Air Space
- 31 Air-Tight Layer



STANDARD DETAIL	
Window lintel + one piece lintel profile	Title
	Scale
	1:2
	Size
	A3
0903030301012300001_GB_en	Detail-Nr.
	Drawn
	gam
	Date
	23.05.12
<p>The detail describes an optional design in standard cases based on a European climate. Any user of this document is responsible to verify the feasibility of the solution with respect to the specific local situation and conditions. Using the documents provided by RHEINZINK is a service, which excludes liability for damages or claims of any kind. Contingent liability for malice or gross negligence is unaffected.</p>	