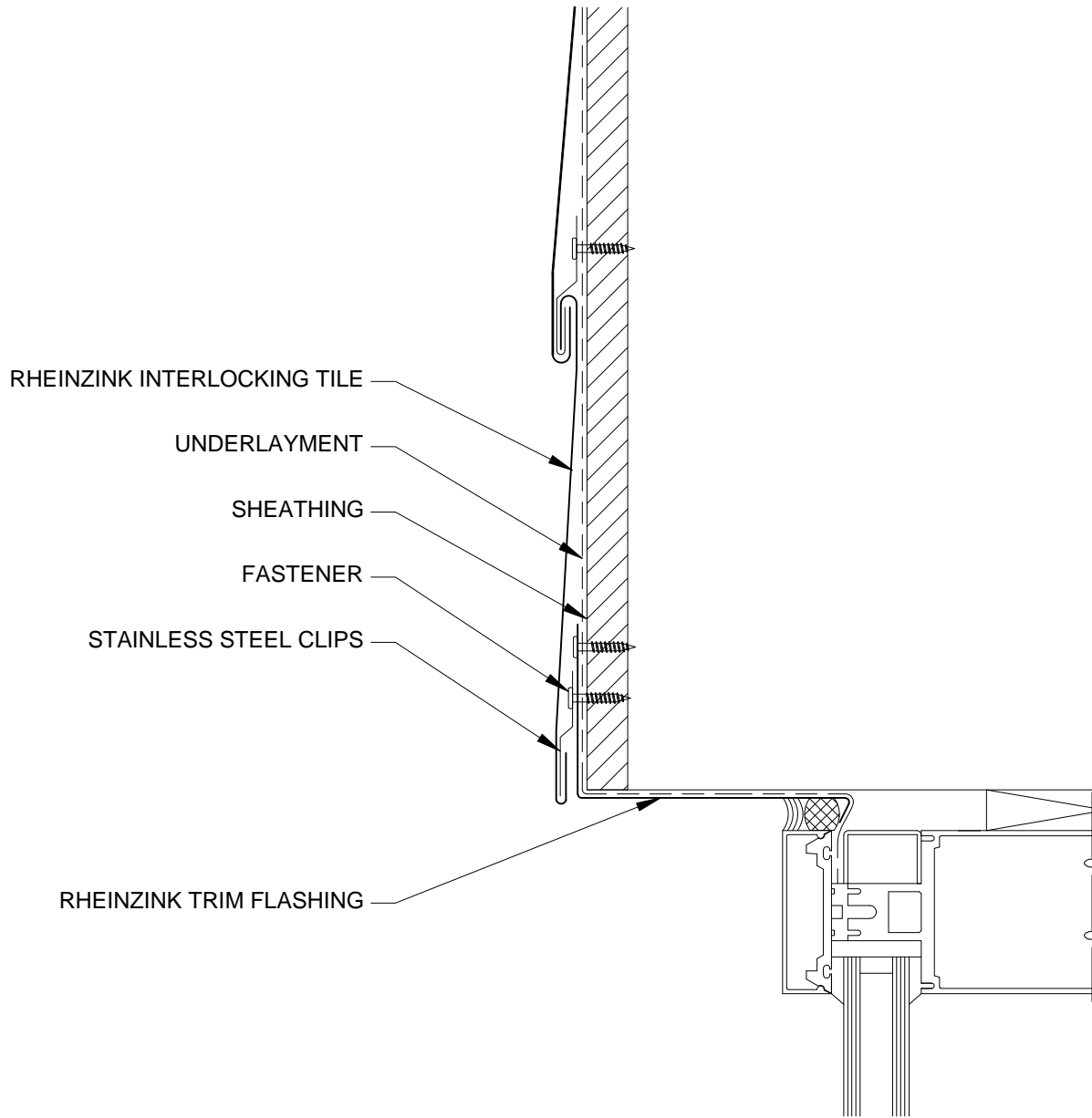


Interlocking Tile Details

- ILTF-1 - Head Detail
- ILTF-2a - Jamb Detail - Opt. 1
- ILTF-2b - Jamb Detail - Opt. 2
- ILTF-2c - Jamb Detail - Opt. 3
- ILTF-3a - Sill Detail - Opt. 1
- ILTF-3b - Sill Detail - Opt. 2
- ILTF-4a - Outside Corner Detail - Opt. 1
- ILTF-4b - Outside Corner Detail - Opt. 2


- ILTF-5a - Inside Corner Detail - Opt. 1
- ILTF-5b - Inside Corner Detail - Opt. 2
- ILTF-6 - Base Termination Detail
- ILTF-7a - Parapet Detail - Opt. 1
- ILTF-7b - Parapet Detail - Opt. 2
- ILTF-8 - Horizontal Seam Detail
- ILTF-9 - Vertical Seam Detail
- ILTF-10 - Diamond Fab. Detail

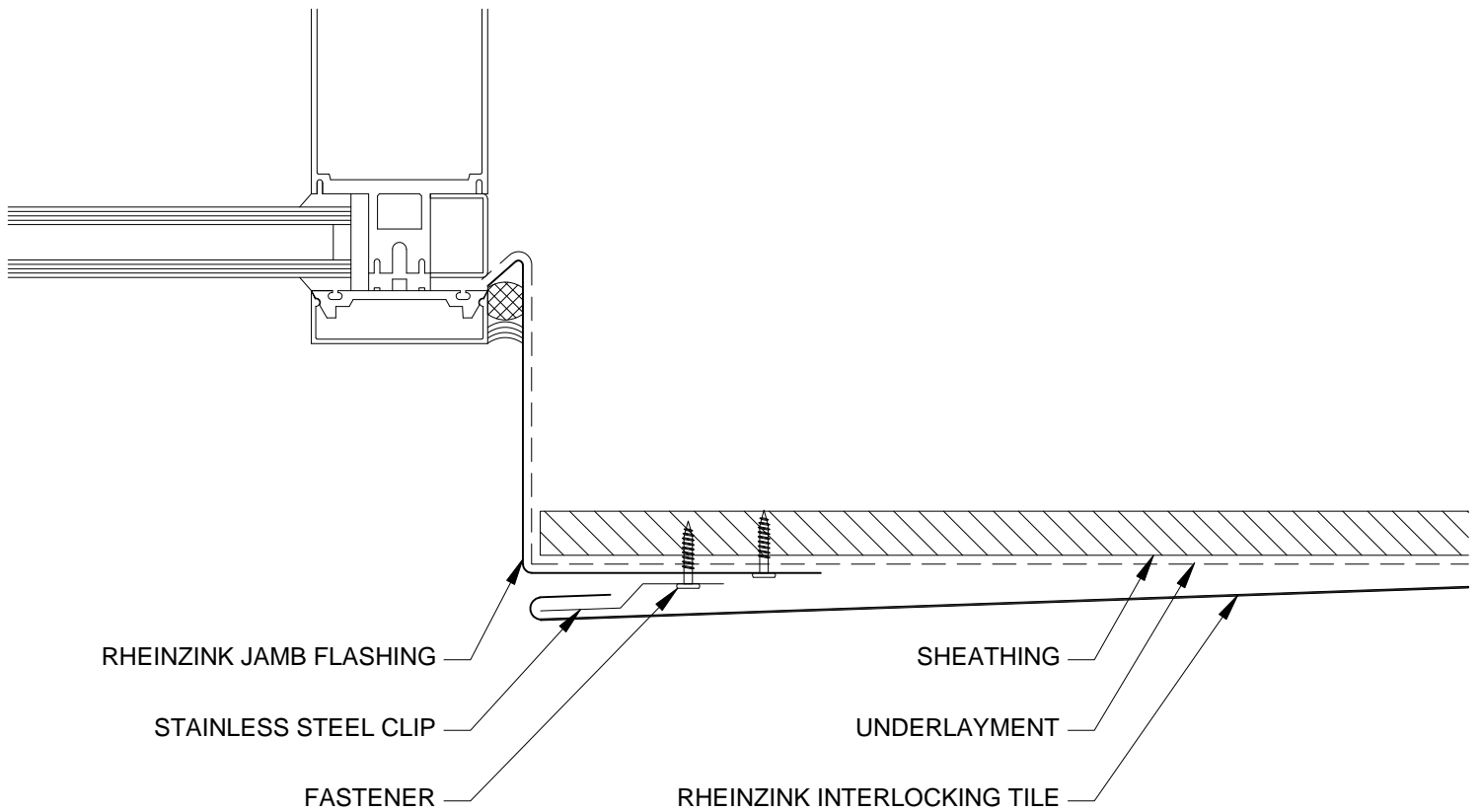
- ILTF-11a - Rect. Fab. Detail - H Fold - Opt. 1
- ILTF-11b - Rect. Fab. Detail - V Fold - Opt. 2
- ILTF-11c - Rect. Fab. Detail - H Fold - Opt. 3
- ILTF-11d - Rect. Fab. Detail - V Fold - Opt. 4
- ILTF-12 - Square Fab. Detail



NOTES:


1. RHEINZINK RECOMMENDS STAINLESS STEEL FASTENERS AND CLIPS.

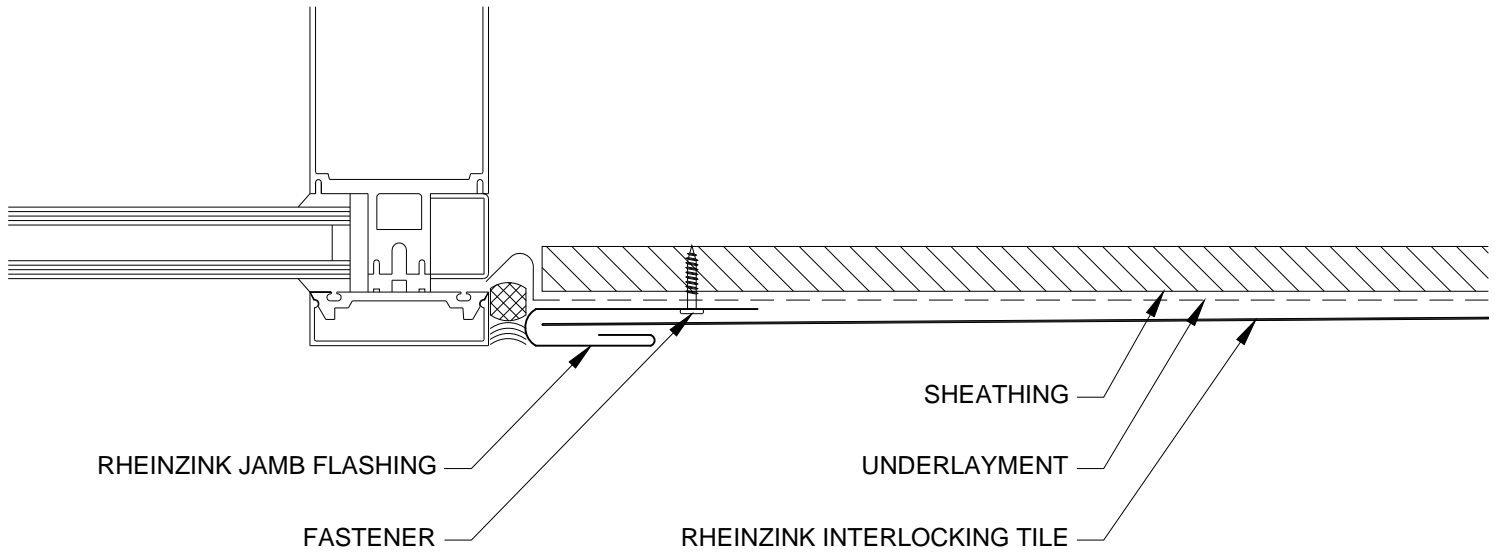
	
96F Commerce Way Woburn, MA 01801 T: 781.729.0812 Website: www.rheinzink.com E-mail: info@rheinzink.com	
INFORMATION AND DETAILS HEREIN ARE ONLY A BASELINE FOR SYSTEM DESIGN AND INSTALLATION. MODIFICATION TO MEET PROJECT REQUIREMENTS IS THE RESPONSIBILITY OF THE DESIGNER AND ARCHITECT. RHEINZINK AMERICA STAFF ARE AVAILABLE TO ASSIST THE DESIGNER AND ARCHITECT IN THIS PROCESS. RHEINZINK AMERICA MAKES NO REPRESENTATIONS AND WARRANTIES OTHER THAN THOSE EXPRESSED HEREIN.	
PROJECT:	INTERLOCKING TILE FACADE
DATE:	03-2012
DRAWING TITLE:	HEAD DETAIL
SCALE:	N.T.S.
COPYRIGHT RESERVED. THIS DRAWING REMAINS THE PROPERTY OF RHEINZINK.	SHEET: ILTF-1



NOTES:


1. RHEINZINK RECOMMENDS STAINLESS STEEL FASTENERS AND CLIPS.

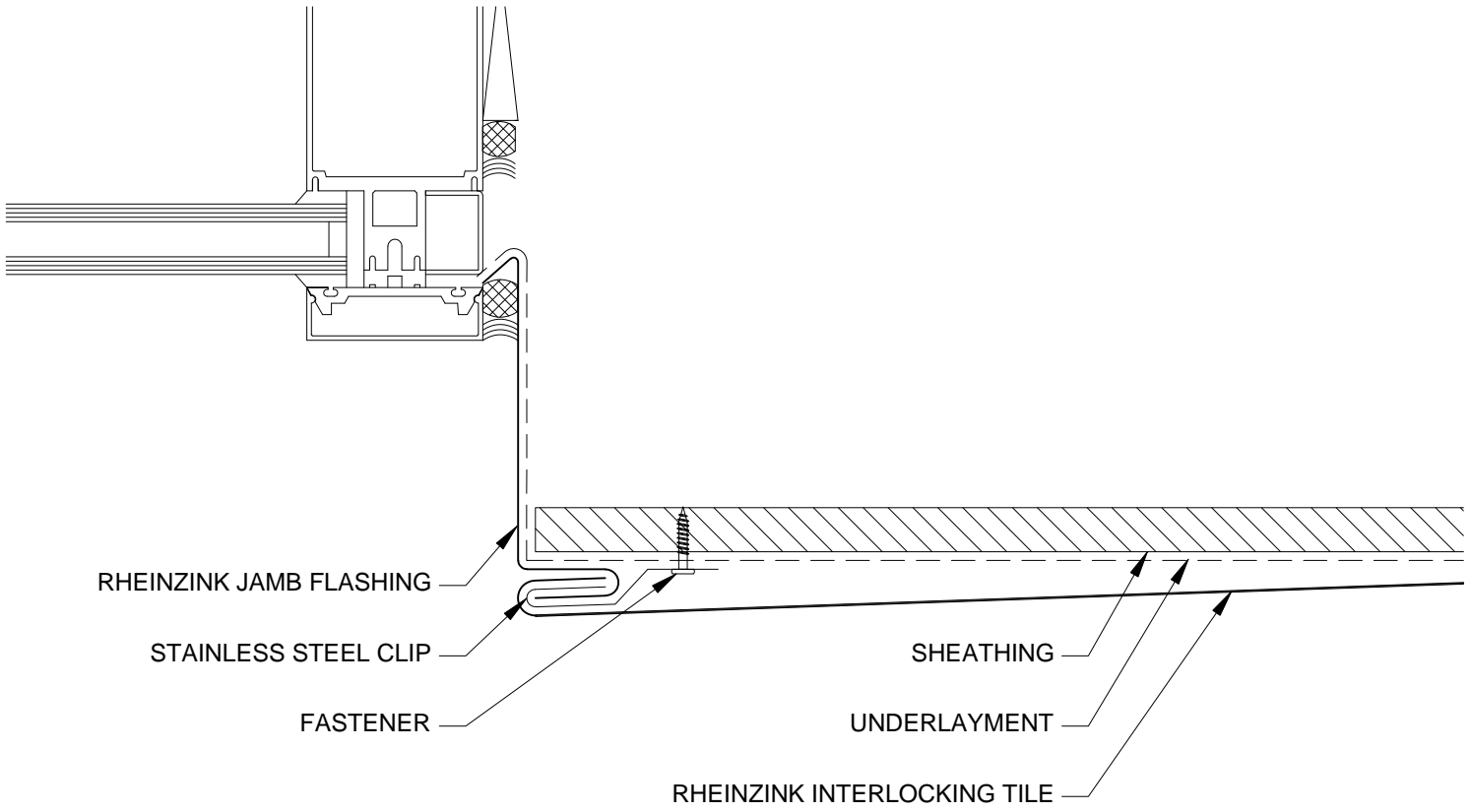
	
96F Commerce Way Woburn, MA 01801 T: 781.729.0812 Website: www.rheinzink.com E-mail: info@rheinzink.com	
INFORMATION AND DETAILS HEREIN ARE ONLY A BASELINE FOR SYSTEM DESIGN AND INSTALLATION. MODIFICATION TO MEET PROJECT REQUIREMENTS IS THE RESPONSIBILITY OF THE DESIGNER AND ARCHITECT. RHEINZINK AMERICA STAFF ARE AVAILABLE TO ASSIST THE DESIGNER AND ARCHITECT IN THIS PROCESS. RHEINZINK AMERICA MAKES NO REPRESENTATIONS AND WARRANTIES OTHER THAN THOSE EXPRESSED HEREIN.	
PROJECT:	INTERLOCKING TILE FACADE
DATE:	03-2012
DRAWING TITLE:	JAMB DETAIL - OPTION 1
SCALE:	N.T.S.
COPYRIGHT RESERVED. THIS DRAWING REMAINS THE PROPERTY OF RHEINZINK.	SHEET: ILTF-2a



NOTES:


1. RHEINZINK RECOMMENDS STAINLESS STEEL FASTENERS AND CLIPS.

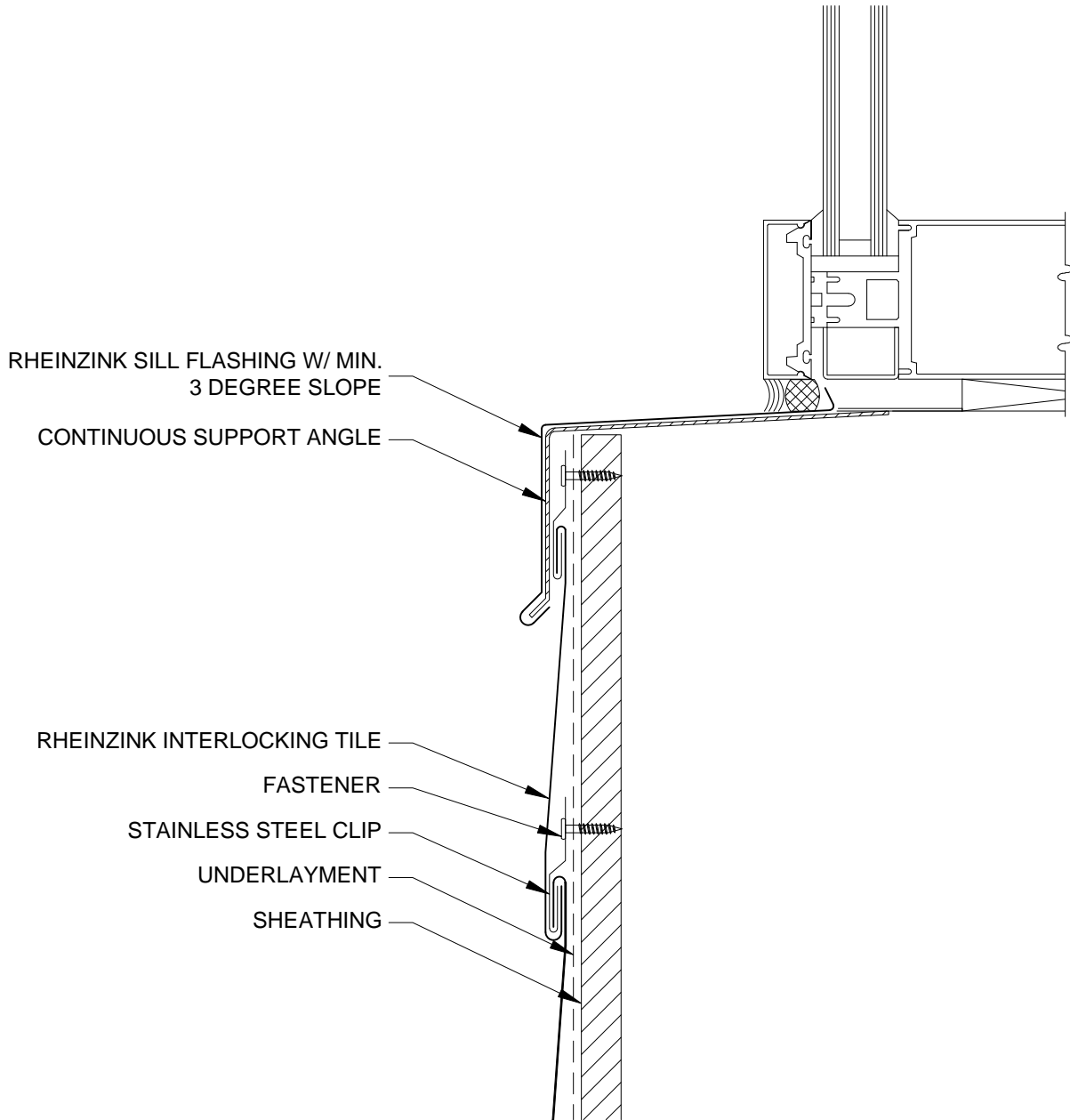
 96F Commerce Way Woburn, MA 01801 T: 781.729.0812 Website: www.rheinzink.com E-mail: info@rheinzink.com	
INFORMATION AND DETAILS HEREIN ARE ONLY A BASELINE FOR SYSTEM DESIGN AND INSTALLATION. MODIFICATION TO MEET PROJECT REQUIREMENTS IS THE RESPONSIBILITY OF THE DESIGNER AND ARCHITECT. RHEINZINK AMERICA STAFF ARE AVAILABLE TO ASSIST THE DESIGNER AND ARCHITECT IN THIS PROCESS. RHEINZINK AMERICA MAKES NO REPRESENTATIONS AND WARRANTIES OTHER THAN THOSE EXPRESSED HEREIN.	
PROJECT:	INTERLOCKING TILE FACADE
DATE:	03-2012
DRAWING TITLE:	JAMB DETAIL - OPTION 2
SCALE:	N.T.S.
COPYRIGHT RESERVED. THIS DRAWING REMAINS THE PROPERTY OF RHEINZINK.	SHEET: ILTF-2b



NOTES:


1. RHEINZINK RECOMMENDS STAINLESS STEEL FASTENERS AND CLIPS.

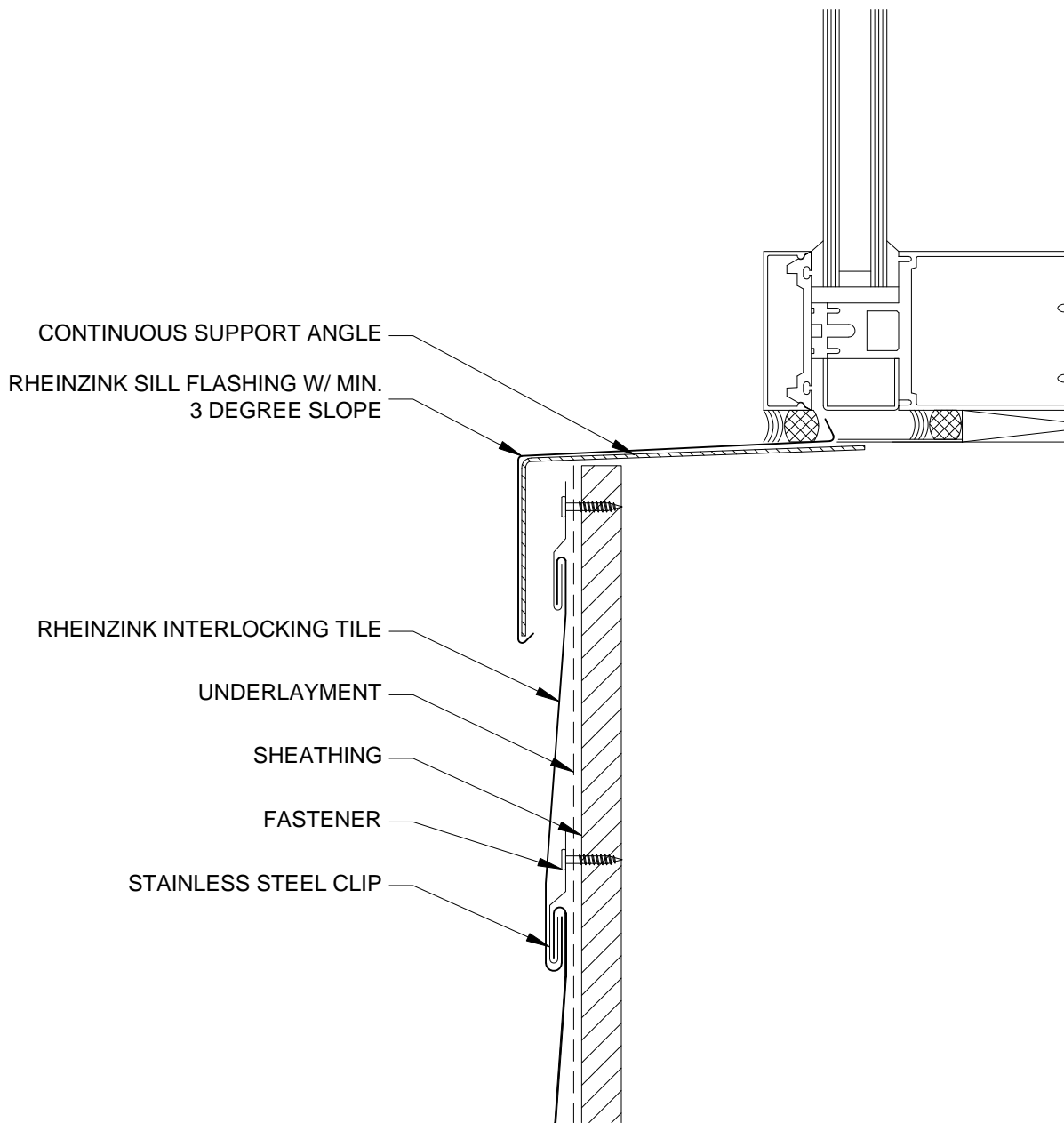
	
96F Commerce Way Woburn, MA 01801 T: 781.729.0812 Website: www.rheinzink.com E-mail: info@rheinzink.com	
INFORMATION AND DETAILS HEREIN ARE ONLY A BASELINE FOR SYSTEM DESIGN AND INSTALLATION. MODIFICATION TO MEET PROJECT REQUIREMENTS IS THE RESPONSIBILITY OF THE DESIGNER AND ARCHITECT. RHEINZINK AMERICA STAFF ARE AVAILABLE TO ASSIST THE DESIGNER AND ARCHITECT IN THIS PROCESS. RHEINZINK AMERICA MAKES NO REPRESENTATIONS AND WARRANTIES OTHER THAN THOSE EXPRESSED HEREIN.	
PROJECT: INTERLOCKING TILE FACADE	DATE: 03-2012
DRAWING TITLE: JAMB DETAIL - OPTION 3	SCALE: N.T.S.
COPYRIGHT RESERVED. THIS DRAWING REMAINS THE PROPERTY OF RHEINZINK.	SHEET: ILTF-2c



NOTES:


1. RHEINZINK RECOMMENDS STAINLESS STEEL FASTENERS AND CLIPS.

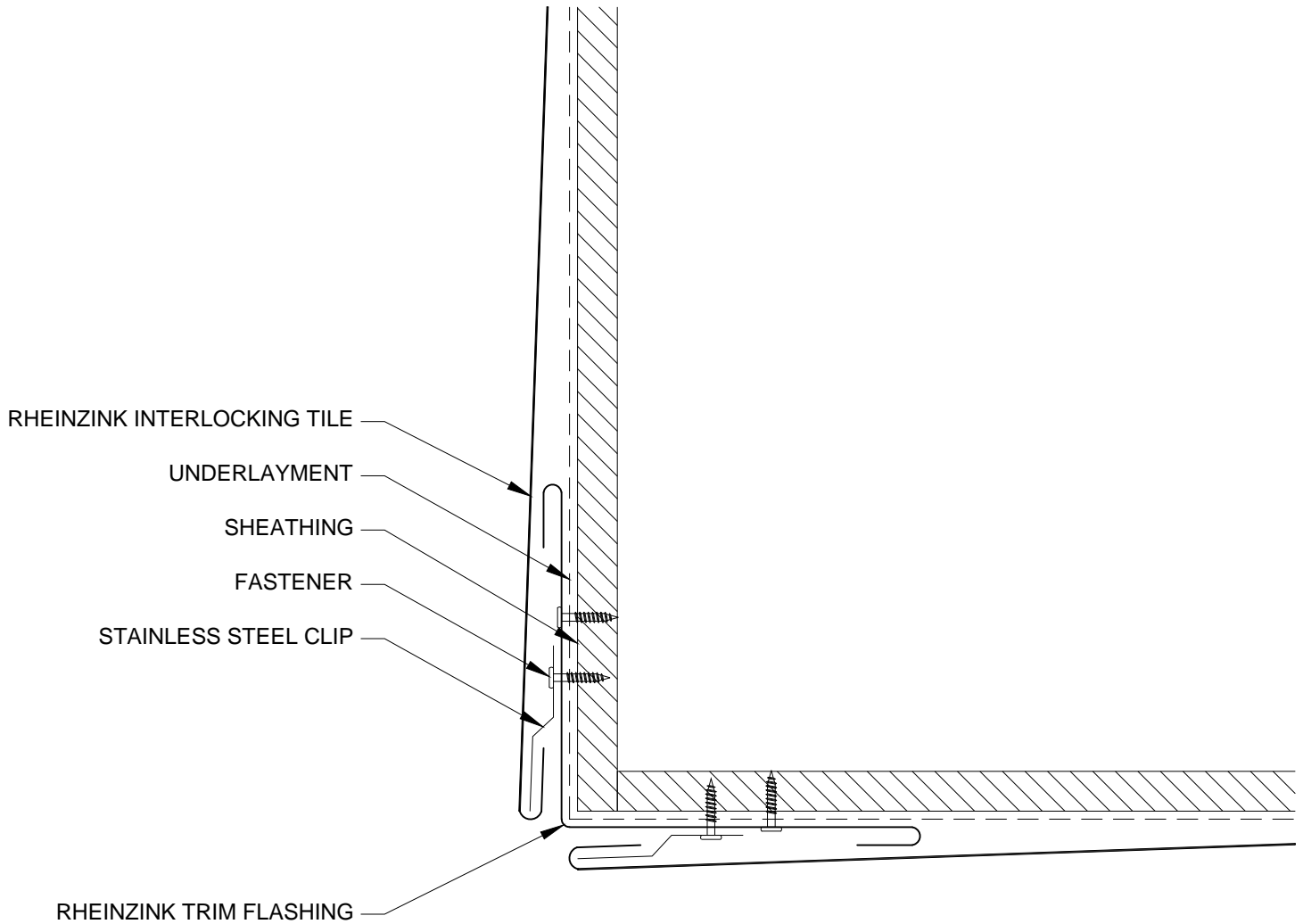
	
96F Commerce Way Woburn, MA 01801 T: 781.729.0812 Website: www.rheinzink.com E-mail: info@rheinzink.com	
INFORMATION AND DETAILS HEREIN ARE ONLY A BASELINE FOR SYSTEM DESIGN AND INSTALLATION. MODIFICATION TO MEET PROJECT REQUIREMENTS IS THE RESPONSIBILITY OF THE DESIGNER AND ARCHITECT. RHEINZINK AMERICA STAFF ARE AVAILABLE TO ASSIST THE DESIGNER AND ARCHITECT IN THIS PROCESS. RHEINZINK AMERICA MAKES NO REPRESENTATIONS AND WARRANTIES OTHER THAN THOSE EXPRESSED HEREIN.	
PROJECT:	INTERLOCKING TILE FACADE
DATE:	03-2012
DRAWING TITLE:	SILL DETAIL - OPTION 1
SCALE:	N.T.S.
COPYRIGHT RESERVED. THIS DRAWING REMAINS THE PROPERTY OF RHEINZINK.	SHEET: ILTF-3a



NOTES:


1. RHEINZINK RECOMMENDS STAINLESS STEEL FASTENERS AND CLIPS.

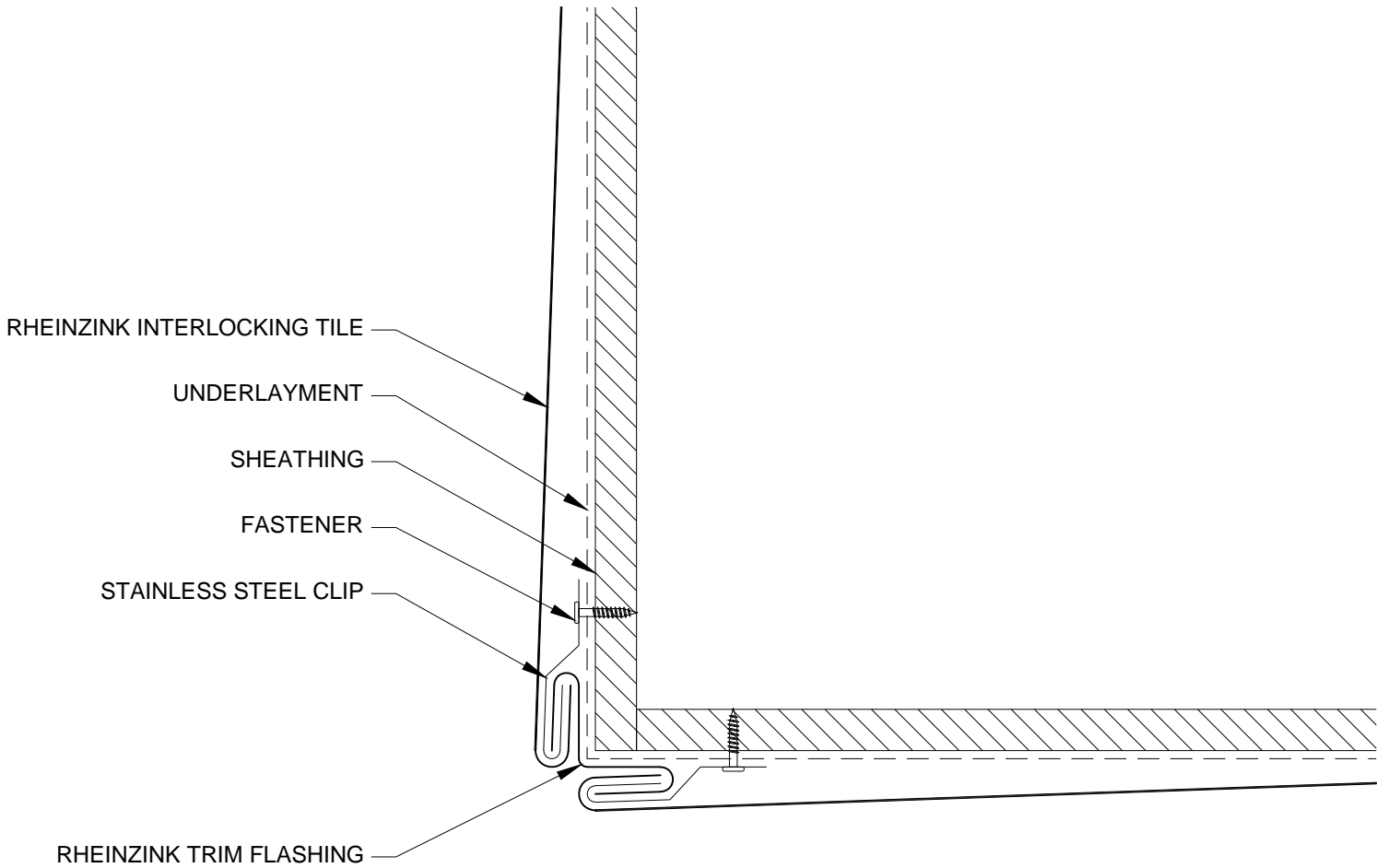
	
96F Commerce Way Woburn, MA 01801 T: 781.729.0812 Website: www.rheinzink.com E-mail: info@rheinzink.com	
INFORMATION AND DETAILS HEREIN ARE ONLY A BASELINE FOR SYSTEM DESIGN AND INSTALLATION. MODIFICATION TO MEET PROJECT REQUIREMENTS IS THE RESPONSIBILITY OF THE DESIGNER AND ARCHITECT. RHEINZINK AMERICA STAFF ARE AVAILABLE TO ASSIST THE DESIGNER AND ARCHITECT IN THIS PROCESS. RHEINZINK AMERICA MAKES NO REPRESENTATIONS AND WARRANTIES OTHER THAN THOSE EXPRESSED HEREIN.	
PROJECT:	INTERLOCKING TILE FACADE
DATE:	03-2012
DRAWING TITLE:	SILL DETAIL - OPTION 2
SCALE:	N.T.S.
COPYRIGHT RESERVED. THIS DRAWING REMAINS THE PROPERTY OF RHEINZINK.	SHEET: ILTF-3b



NOTES:


1. RHEINZINK RECOMMENDS STAINLESS STEEL FASTENERS AND CLIPS.

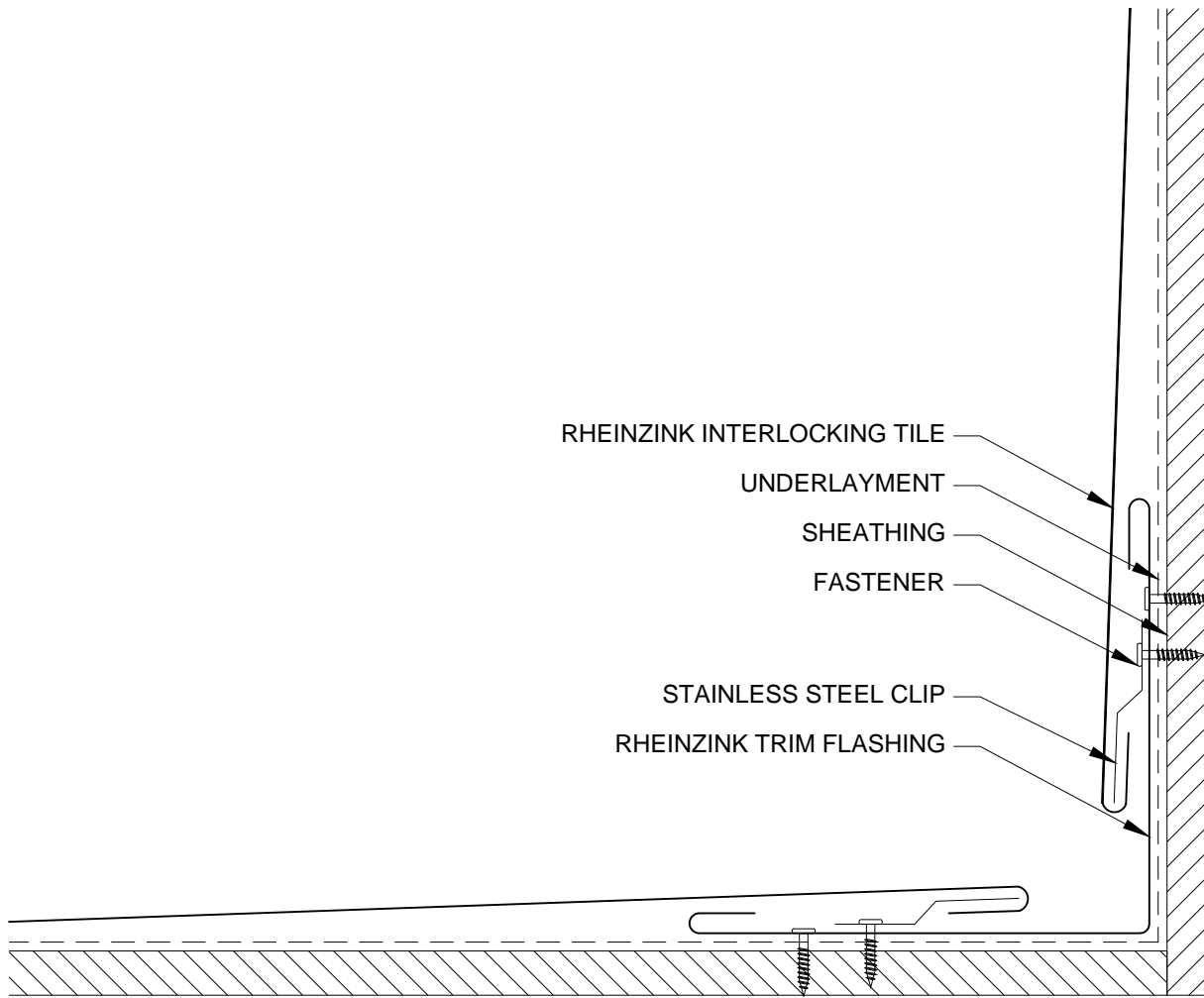
	
96F Commerce Way Woburn, MA 01801 T: 781.729.0812 Website: www.rheinzink.com E-mail: info@rheinzink.com	
INFORMATION AND DETAILS HEREIN ARE ONLY A BASELINE FOR SYSTEM DESIGN AND INSTALLATION. MODIFICATION TO MEET PROJECT REQUIREMENTS IS THE RESPONSIBILITY OF THE DESIGNER AND ARCHITECT. RHEINZINK AMERICA STAFF ARE AVAILABLE TO ASSIST THE DESIGNER AND ARCHITECT IN THIS PROCESS. RHEINZINK AMERICA MAKES NO REPRESENTATIONS AND WARRANTIES OTHER THAN THOSE EXPRESSED HEREIN.	
PROJECT: INTERLOCKING TILE FACADE	DATE: 03-2012
DRAWING TITLE: OUTSIDE CORNER - OPTION 1	SCALE: N.T.S.
COPYRIGHT RESERVED. THIS DRAWING REMAINS THE PROPERTY OF RHEINZINK.	SHEET: ILTF-4a



NOTES:


1. RHEINZINK RECOMMENDS STAINLESS STEEL FASTENERS AND CLIPS.

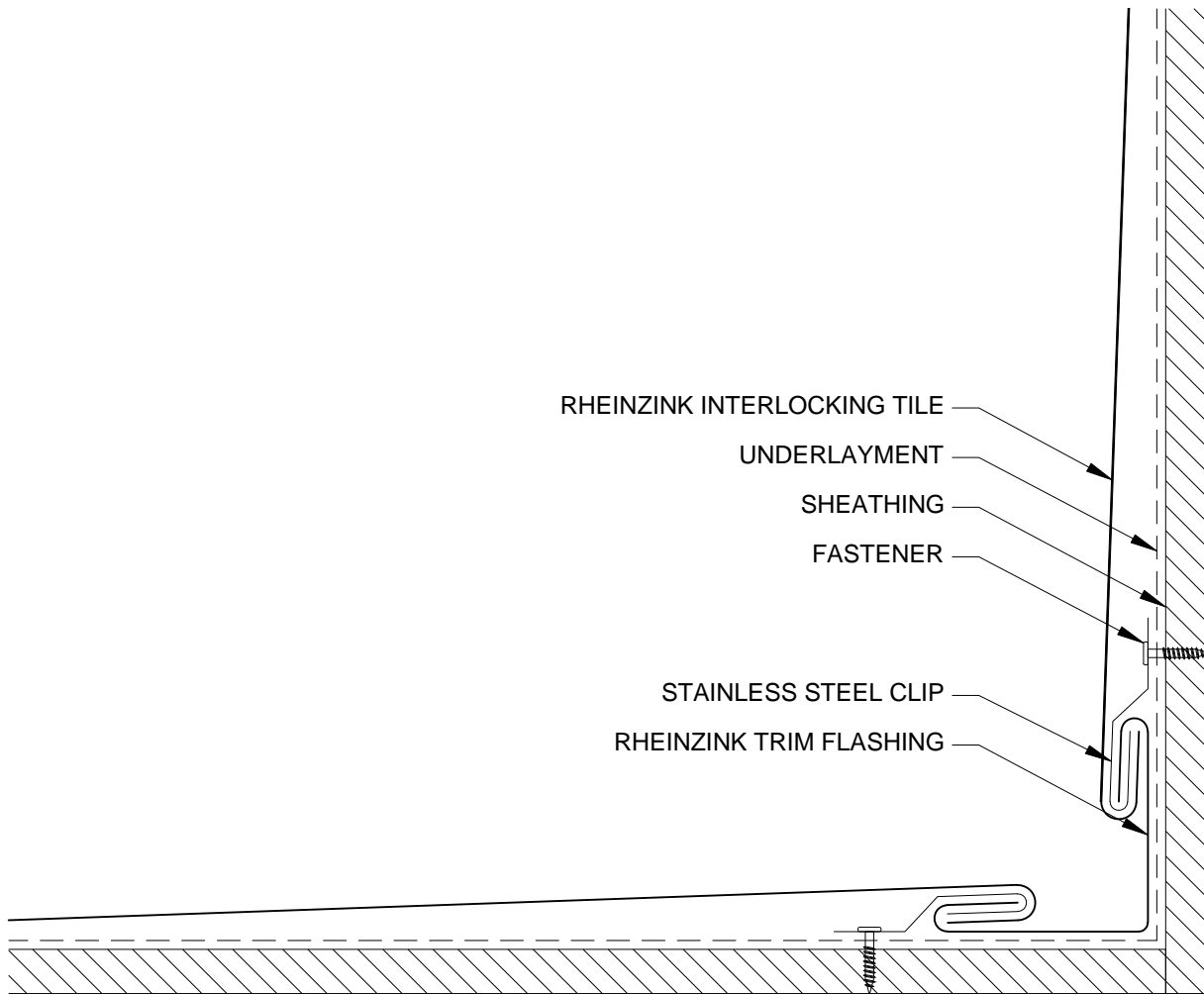
	
96F Commerce Way Woburn, MA 01801 T: 781.729.0812 Website: www.rheinzink.com E-mail: info@rheinzink.com	
INFORMATION AND DETAILS HEREIN ARE ONLY A BASELINE FOR SYSTEM DESIGN AND INSTALLATION. MODIFICATION TO MEET PROJECT REQUIREMENTS IS THE RESPONSIBILITY OF THE DESIGNER AND ARCHITECT. RHEINZINK AMERICA STAFF ARE AVAILABLE TO ASSIST THE DESIGNER AND ARCHITECT IN THIS PROCESS. RHEINZINK AMERICA MAKES NO REPRESENTATIONS AND WARRANTIES OTHER THAN THOSE EXPRESSED HEREIN.	
PROJECT:	INTERLOCKING TILE FACADE
DATE:	03-2012
DRAWING TITLE:	OUTSIDE CORNER - OPTION 2
SCALE:	N.T.S.
COPYRIGHT RESERVED. THIS DRAWING REMAINS THE PROPERTY OF RHEINZINK.	SHEET: ILTF-4b



NOTES:


1. RHEINZINK RECOMMENDS STAINLESS STEEL FASTENERS AND CLIPS.

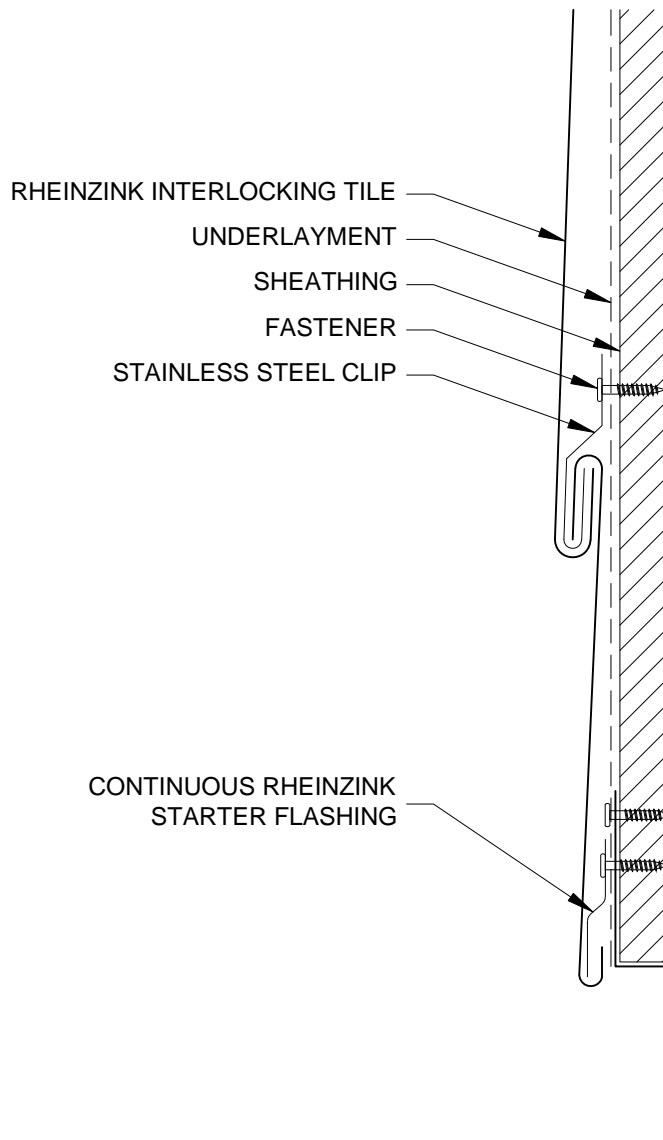
	
96F Commerce Way Woburn, MA 01801 T: 781.729.0812 Website: www.rheinzink.com E-mail: info@rheinzink.com	
INFORMATION AND DETAILS HEREIN ARE ONLY A BASELINE FOR SYSTEM DESIGN AND INSTALLATION. MODIFICATION TO MEET PROJECT REQUIREMENTS IS THE RESPONSIBILITY OF THE DESIGNER AND ARCHITECT. RHEINZINK AMERICA STAFF ARE AVAILABLE TO ASSIST THE DESIGNER AND ARCHITECT IN THIS PROCESS. RHEINZINK AMERICA MAKES NO REPRESENTATIONS AND WARRANTIES OTHER THAN THOSE EXPRESSED HEREIN.	
PROJECT: INTERLOCKING TILE FACADE	DATE: 03-2012
DRAWING TITLE: INSIDE CORNER DETAIL - OPTION 1	SCALE: N.T.S.
COPYRIGHT RESERVED. THIS DRAWING REMAINS THE PROPERTY OF RHEINZINK.	SHEET: ILTF-5a



NOTES:


1. RHEINZINK RECOMMENDS STAINLESS STEEL FASTENERS AND CLIPS.

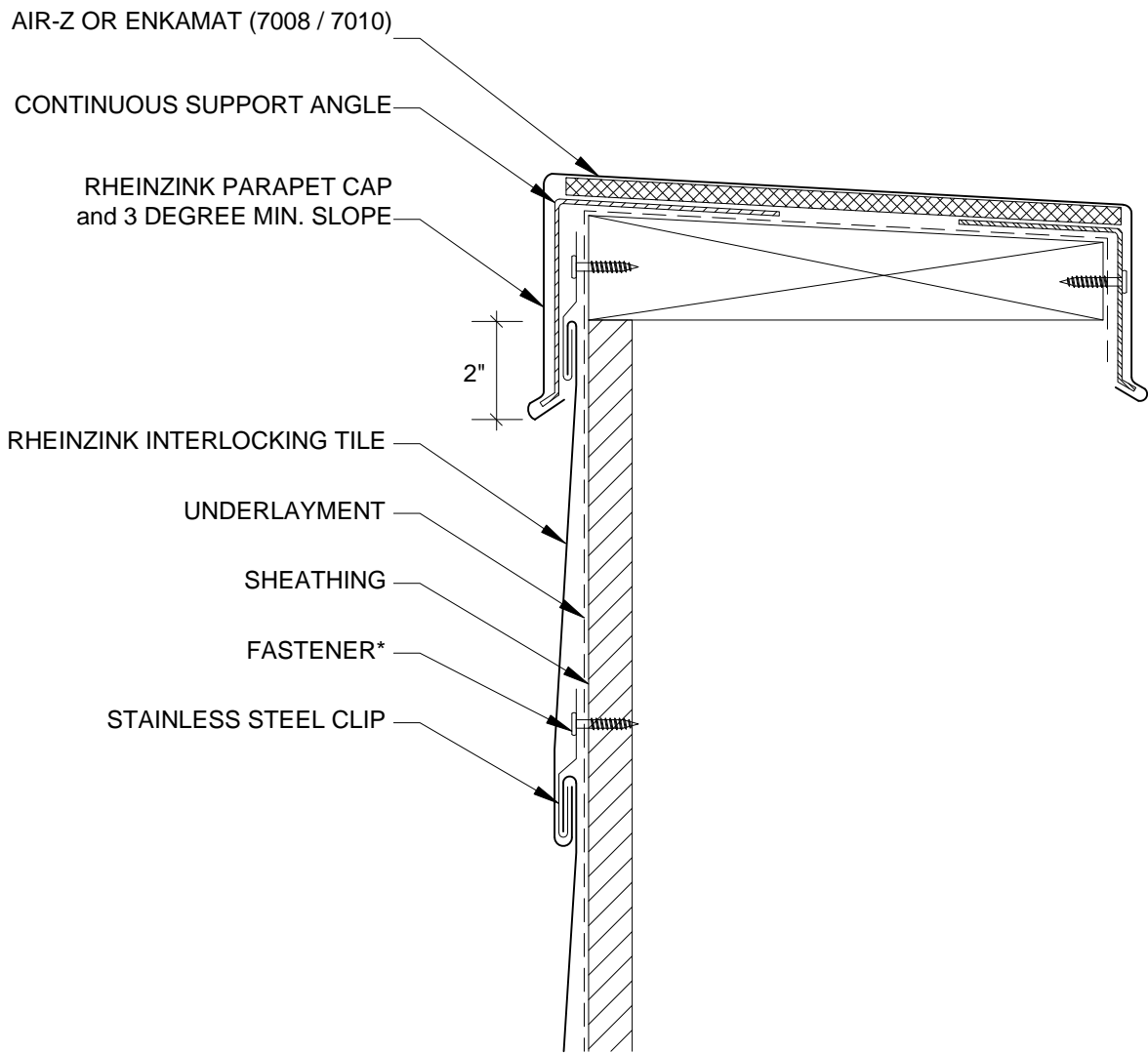
	
96F Commerce Way Woburn, MA 01801 T: 781.729.0812 Website: www.rheinzink.com E-mail: info@rheinzink.com	
INFORMATION AND DETAILS HEREIN ARE ONLY A BASELINE FOR SYSTEM DESIGN AND INSTALLATION. MODIFICATION TO MEET PROJECT REQUIREMENTS IS THE RESPONSIBILITY OF THE DESIGNER AND ARCHITECT. RHEINZINK AMERICA STAFF ARE AVAILABLE TO ASSIST THE DESIGNER AND ARCHITECT IN THIS PROCESS. RHEINZINK AMERICA MAKES NO REPRESENTATIONS AND WARRANTIES OTHER THAN THOSE EXPRESSED HEREIN.	
PROJECT: INTERLOCKING TILE FACADE	DATE: 03-2012
DRAWING TITLE: INSIDE CORNER DETAIL - OPTION 2	SCALE: N.T.S.
COPYRIGHT RESERVED. THIS DRAWING REMAINS THE PROPERTY OF RHEINZINK.	SHEET: ILTF-5b



NOTES:


1. RHEINZINK RECOMMENDS STAINLESS STEEL FASTENERS AND CLIPS.

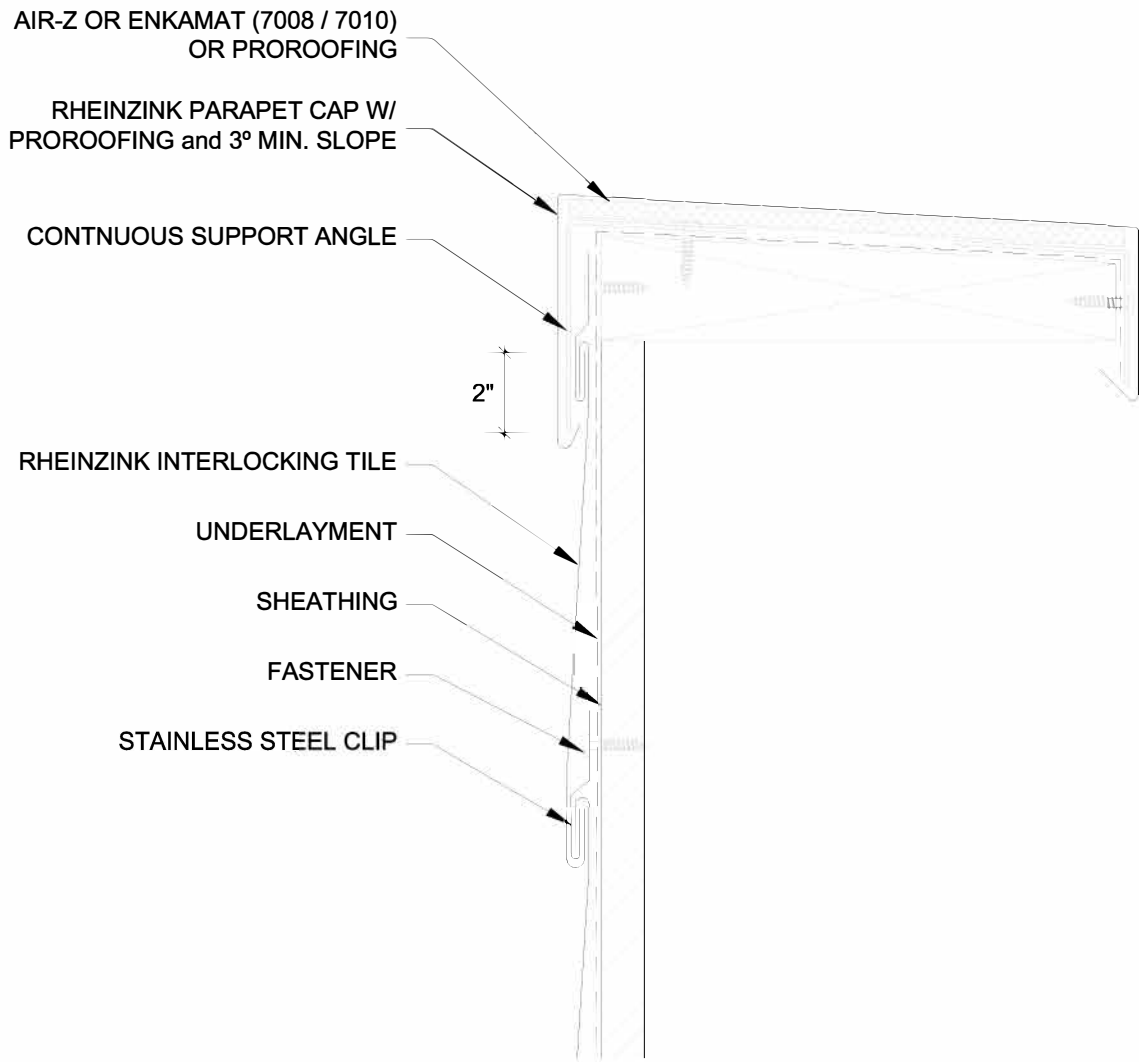
 96F Commerce Way Woburn, MA 01801 T: 781.729.0812 Website: www.rheinzink.com E-mail: info@rheinzink.com	
INFORMATION AND DETAILS HEREIN ARE ONLY A BASELINE FOR SYSTEM DESIGN AND INSTALLATION. MODIFICATION TO MEET PROJECT REQUIREMENTS IS THE RESPONSIBILITY OF THE DESIGNER AND ARCHITECT. RHEINZINK AMERICA STAFF ARE AVAILABLE TO ASSIST THE DESIGNER AND ARCHITECT IN THIS PROCESS. RHEINZINK AMERICA MAKES NO REPRESENTATIONS AND WARRANTIES OTHER THAN THOSE EXPRESSED HEREIN.	
PROJECT: INTERLOCKING TILE FACADE	DATE: 03-2012
DRAWING TITLE: BASE TERMINATION	SCALE: N.T.S.
COPYRIGHT RESERVED. THIS DRAWING REMAINS THE PROPERTY OF RHEINZINK.	SHEET: ILTF-6



NOTES:


1. RHEINZINK RECOMMENDS STAINLESS STEEL FASTENERS AND CLIPS.

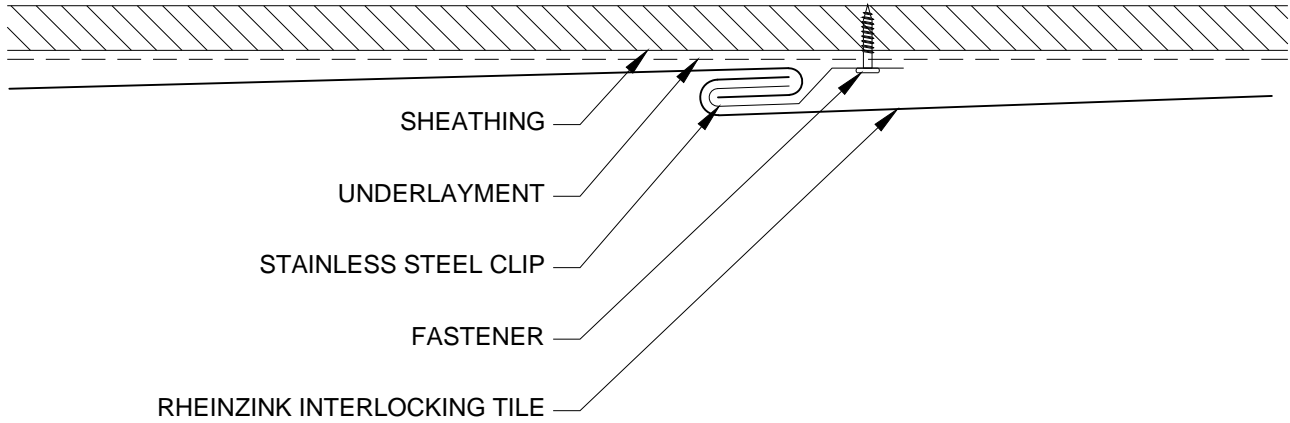
 Website: www.rheinzink.com E-mail: info@rheinzink.com	
INFORMATION AND DETAILS HEREIN ARE ONLY A BASELINE FOR SYSTEM DESIGN AND INSTALLATION. MODIFICATION TO MEET PROJECT REQUIREMENTS IS THE RESPONSIBILITY OF THE DESIGNER AND ARCHITECT. RHEINZINK AMERICA STAFF ARE AVAILABLE TO ASSIST THE DESIGNER AND ARCHITECT IN THIS PROCESS. RHEINZINK AMERICA MAKES NO REPRESENTATIONS AND WARRANTIES OTHER THAN THOSE EXPRESSED HEREIN.	
PROJECT: INTERLOCKING TILE FACADE	DATE: 03-2012
DRAWING TITLE: PARAPET DETAIL - OPTION 1	SCALE: N.T.S.
COPYRIGHT RESERVED. THIS DRAWING REMAINS THE PROPERTY OF RHEINZINK.	SHEET: ILTF-7a



NOTES:

1. RHEINZINK RECOMMENDS STAINLESS STEEL FASTENERS AND CLIPS.

	
Website: www.rheinzink.com E-mail: info@rheinzink.com	
INFORMATION AND DETAILS HEREIN ARE ONLY A BASELINE FOR SYSTEM DESIGN AND INSTALLATION. MODIFICATION TO MEET PROJECT REQUIREMENTS IS THE RESPONSIBILITY OF THE DESIGNER AND ARCHITECT. RHEINZINK AMERICA STAFF ARE AVAILABLE TO ASSIST THE DESIGNER AND ARCHITECT IN THIS PROCESS. RHEINZINK AMERICA MAKES NO REPRESENTATIONS AND WARRANTIES OTHER THAN THOSE EXPRESSED HEREIN.	
PROJECT:	INTERLOCKING TILE FACADE
DATE:	03-2019
DRAWING TITLE:	PARAPET DETAIL - OPTION 2
SCALE:	N.T.S.
COPYRIGHT RESERVED. THIS DRAWING REMAINS THE PROPERTY OF RHEINZINK.	SHEET: ILTF-7b



NOTES:

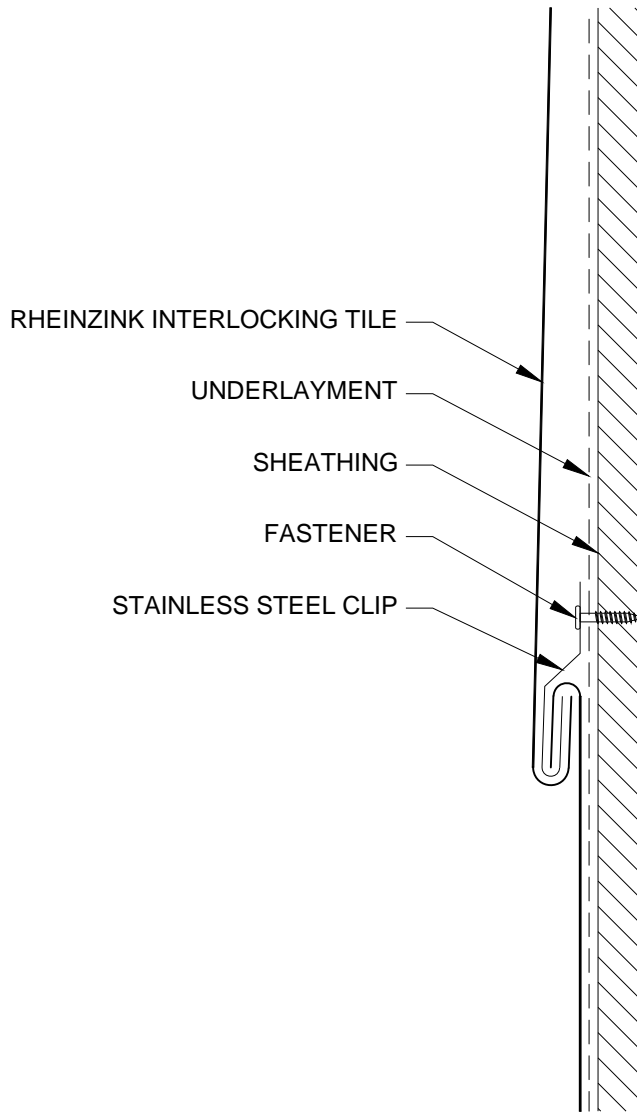
1. RHEINZINK RECOMMENDS STAINLESS STEEL FASTENERS AND CLIPS.



Website: www.rheinzink.com E-mail: info@rheinzink.com

INFORMATION AND DETAILS HEREIN ARE ONLY A BASELINE FOR SYSTEM DESIGN AND INSTALLATION. MODIFICATION TO MEET PROJECT REQUIREMENTS IS THE RESPONSIBILITY OF THE DESIGNER AND ARCHITECT. RHEINZINK AMERICA STAFF ARE AVAILABLE TO ASSIST THE DESIGNER AND ARCHITECT IN THIS PROCESS. RHEINZINK AMERICA MAKES NO REPRESENTATIONS AND WARRANTIES OTHER THAN THOSE EXPRESSED HEREIN.

PROJECT:	INTERLOCKING TILE FACADE	DATE:	03-2012
DRAWING TITLE:	HORIZONTAL SEAM JOINT	SCALE:	N.T.S.
COPYRIGHT RESERVED. THIS DRAWING REMAINS THE PROPERTY OF RHEINZINK.		SHEET:	ILTF-8



NOTES:

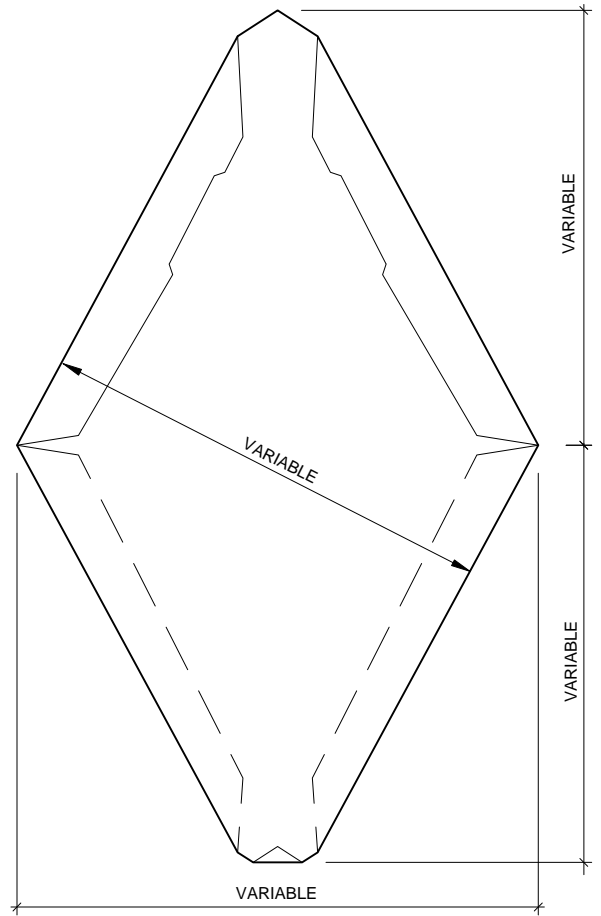
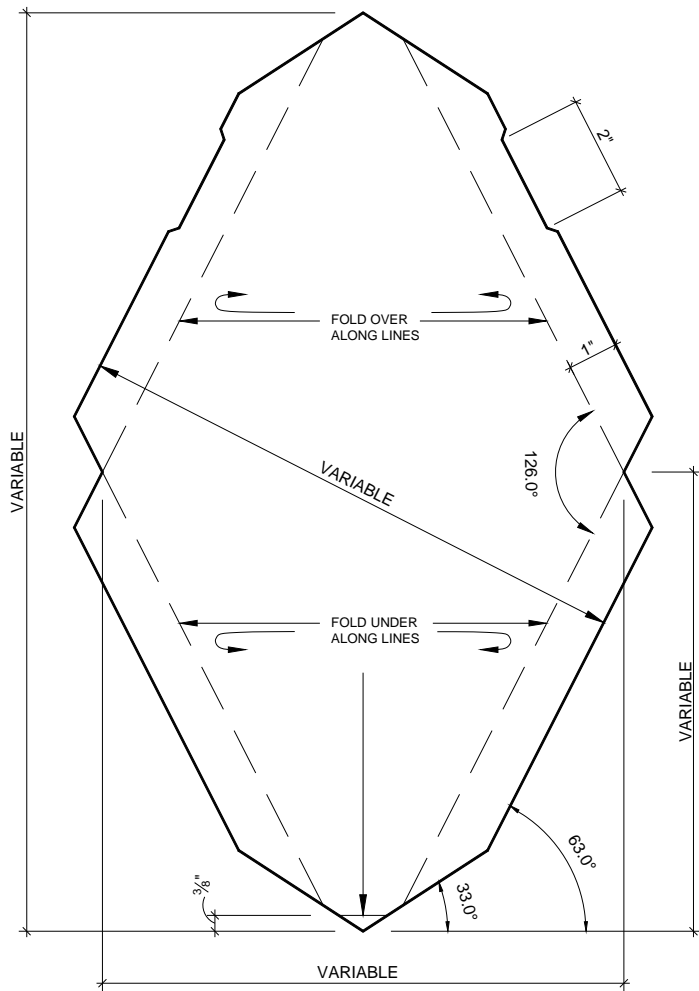
1. RHEINZINK RECOMMENDS STAINLESS STEEL FASTENERS AND CLIPS.



Website: www.rheinzink.com E-mail: info@rheinzink.com

INFORMATION AND DETAILS HEREIN ARE ONLY A BASELINE FOR SYSTEM DESIGN AND INSTALLATION. MODIFICATION TO MEET PROJECT REQUIREMENTS IS THE RESPONSIBILITY OF THE DESIGNER AND ARCHITECT. RHEINZINK AMERICA STAFF ARE AVAILABLE TO ASSIST THE DESIGNER AND ARCHITECT IN THIS PROCESS. RHEINZINK AMERICA MAKES NO REPRESENTATIONS AND WARRANTIES OTHER THAN THOSE EXPRESSED HEREIN.

PROJECT:	INTERLOCKING TILE FACADE	DATE:	03-2012
DRAWING TITLE:	VERTICAL SEAM JOINT	SCALE:	N.T.S.
COPYRIGHT RESERVED. THIS DRAWING REMAINS THE PROPERTY OF RHEINZINK.		SHEET:	ILTF-9



NOTES:

1. RHEINZINK RECOMMENDS STAINLESS STEEL FASTENERS AND CLIPS.
2. CLIP QUANTITY AND SPACING TO BE DETERMINED BY ENGINEERING CALCULATIONS



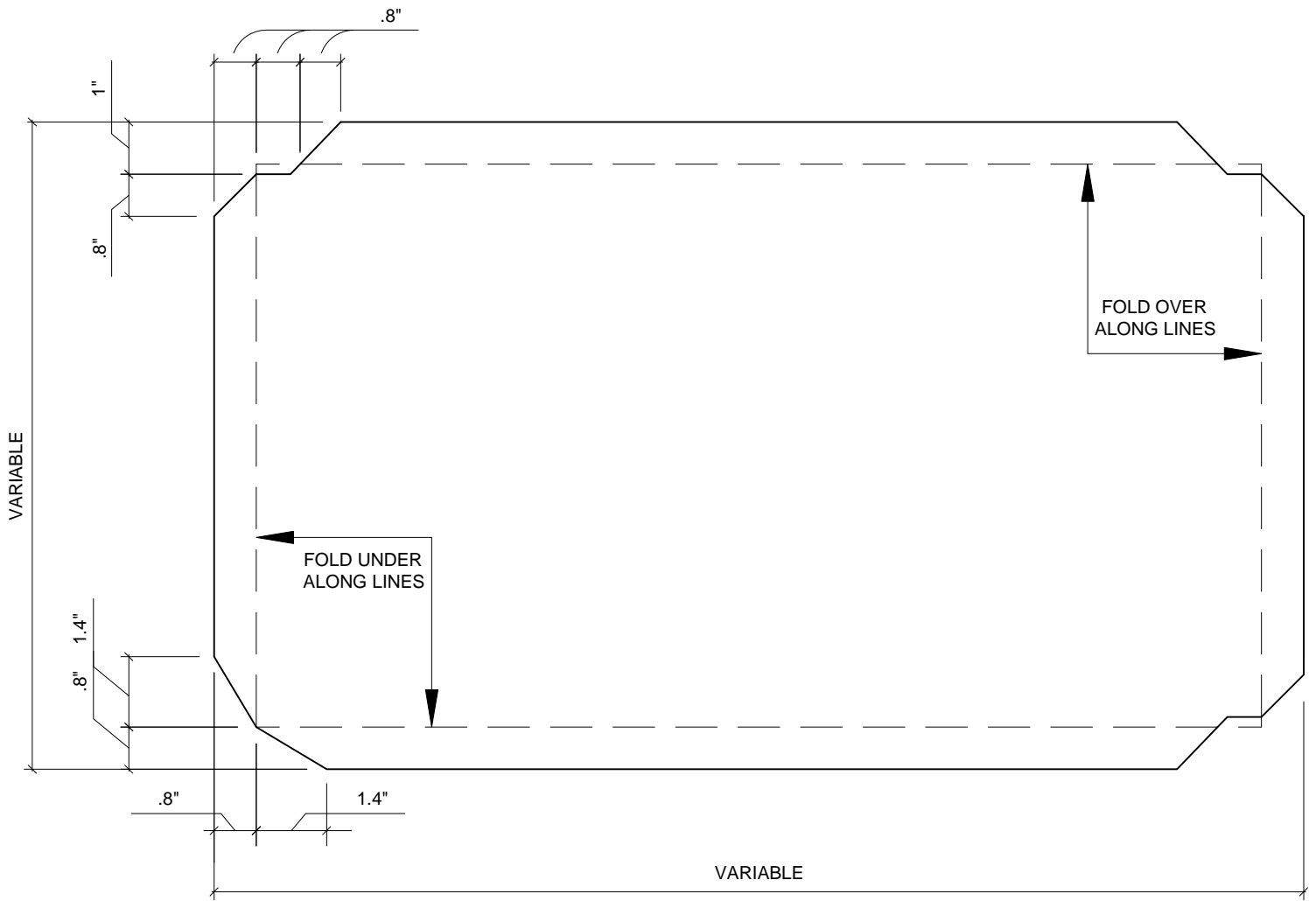
Website: www.rheinzink.com E-mail: info@rheinzink.com

INFORMATION AND DETAILS HEREIN ARE ONLY A BASELINE FOR SYSTEM DESIGN AND INSTALLATION. MODIFICATION TO MEET PROJECT REQUIREMENTS IS THE RESPONSIBILITY OF THE DESIGNER AND ARCHITECT. RHEINZINK AMERICA STAFF ARE AVAILABLE TO ASSIST THE DESIGNER AND ARCHITECT IN THIS PROCESS. RHEINZINK AMERICA MAKES NO REPRESENTATIONS AND WARRANTIES OTHER THAN THOSE EXPRESSED HEREIN.

PROJECT:	INTERLOCKING TILE FACADE	DATE:	03-2012
----------	---------------------------------	-------	----------------

DRAWING TITLE:	DIAMOND FABRICATION DETAIL	SCALE:	N.T.S.
----------------	-----------------------------------	--------	---------------

COPYRIGHT RESERVED. THIS DRAWING REMAINS THE PROPERTY OF RHEINZINK.	SHEET:	ILTF-10
---	--------	----------------



NOTES:

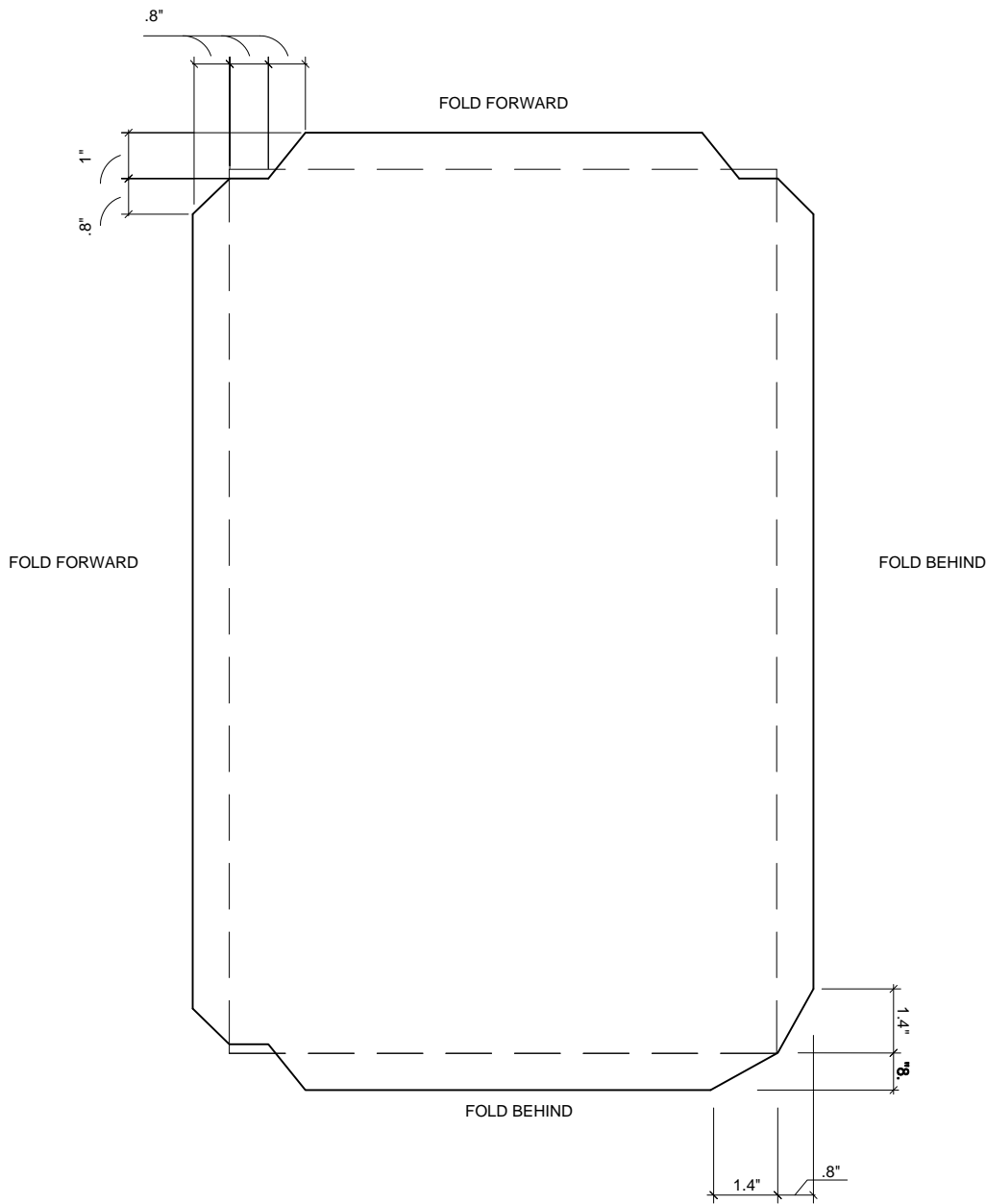
1. RHEINZINK RECOMMENDS STAINLESS STEEL FASTENERS AND CLIPS.
2. CLIP QUANTITY AND SPACING TO BE DETERMINED BY ENGINEERING CALCULATIONS



Website: www.rheinzink.com E-mail: info@rheinzink.com


INFORMATION AND DETAILS HEREIN ARE ONLY A BASELINE FOR SYSTEM DESIGN AND INSTALLATION. MODIFICATION TO MEET PROJECT REQUIREMENTS IS THE RESPONSIBILITY OF THE DESIGNER AND ARCHITECT. RHEINZINK AMERICA STAFF ARE AVAILABLE TO ASSIST THE DESIGNER AND ARCHITECT IN THIS PROCESS. RHEINZINK AMERICA MAKES NO REPRESENTATIONS AND WARRANTIES OTHER THAN THOSE EXPRESSED HEREIN.

PROJECT:	INTERLOCKING TILE FACADE	DATE:	03-2012
DRAWING TITLE:	RECTANGULAR FABRICATION - H	SCALE:	N.T.S.
COPYRIGHT RESERVED. THIS DRAWING REMAINS THE PROPERTY OF RHEINZINK.		SHEET:	ILTF-11a



NOTES:

1. RHEINZINK RECOMMENDS STAINLESS STEEL FASTENERS AND CLIPS.
2. CLIP QUANTITY AND SPACING TO BE DETERMINED BY ENGINEERING CALCULATIONS

	
Website: www.rheinzink.com E-mail: info@rheinzink.com	
INFORMATION AND DETAILS HEREIN ARE ONLY A BASELINE FOR SYSTEM DESIGN AND INSTALLATION. MODIFICATION TO MEET PROJECT REQUIREMENTS IS THE RESPONSIBILITY OF THE DESIGNER AND ARCHITECT. RHEINZINK AMERICA STAFF ARE AVAILABLE TO ASSIST THE DESIGNER AND ARCHITECT IN THIS PROCESS. RHEINZINK AMERICA MAKES NO REPRESENTATIONS AND WARRANTIES OTHER THAN THOSE EXPRESSED HEREIN.	
PROJECT:	INTERLOCKING TILE FACADE
DATE:	03-2012
DRAWING TITLE:	RECTANGULAR FABRICATION - V
SCALE:	N.T.S.
COPYRIGHT RESERVED. THIS DRAWING REMAINS THE PROPERTY OF RHEINZINK.	SHEET:
	ILTF-11b



NOTES:

1. RHEINZINK RECOMMENDS STAINLESS STEEL FASTENERS AND CLIPS.
2. CLIP QUANTITY AND SPACING TO BE DETERMINED BY ENGINEERING CALCULATIONS



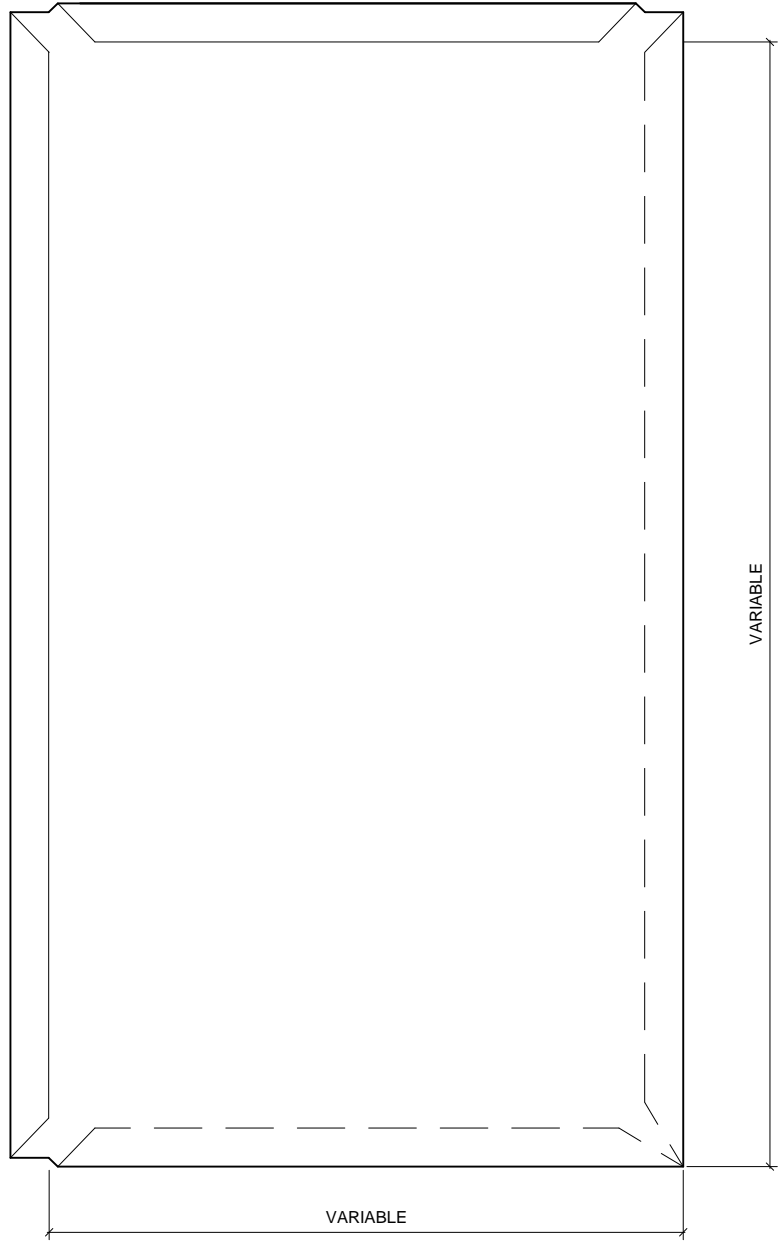
Website: www.rheinzink.com E-mail: info@rheinzink.com

INFORMATION AND DETAILS HEREIN ARE ONLY A BASELINE FOR SYSTEM DESIGN AND INSTALLATION. MODIFICATION TO MEET PROJECT REQUIREMENTS IS THE RESPONSIBILITY OF THE DESIGNER AND ARCHITECT. RHEINZINK AMERICA STAFF ARE AVAILABLE TO ASSIST THE DESIGNER AND ARCHITECT IN THIS PROCESS. RHEINZINK AMERICA MAKES NO REPRESENTATIONS AND WARRANTIES OTHER THAN THOSE EXPRESSED HEREIN.

PROJECT:	INTERLOCKING TILE FACADE	DATE:	03-2019
----------	---------------------------------	-------	----------------


DRAWING TITLE:	RECTANGULAR FABRICATION - H	SCALE:	N.T.S.
----------------	------------------------------------	--------	---------------

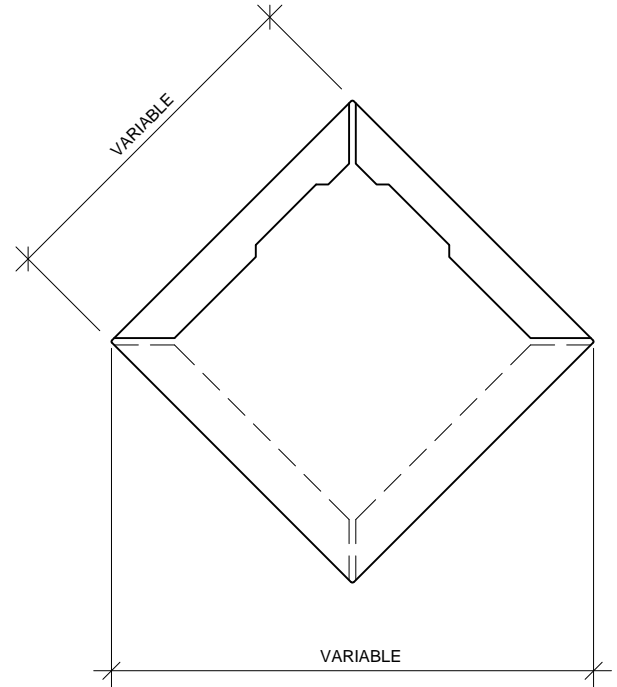
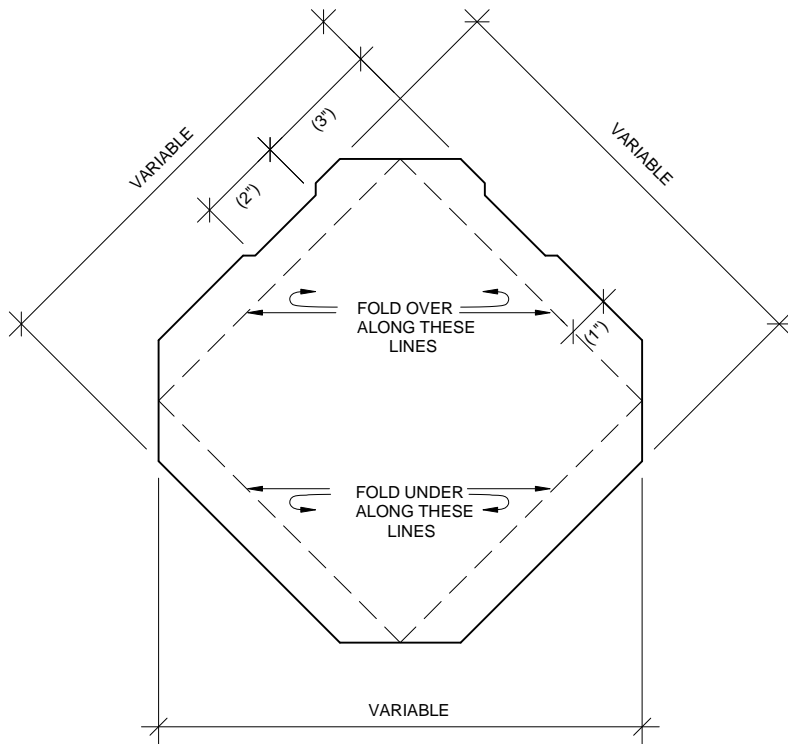
COPYRIGHT RESERVED. THIS DRAWING REMAINS THE PROPERTY OF RHEINZINK.	SHEET:	ILTF-11c
---	--------	-----------------



NOTES:

1. RHEINZINK RECOMMENDS STAINLESS STEEL FASTENERS AND CLIPS.
2. CLIP QUANTITY AND SPACING TO BE DETERMINED BY ENGINEERING CALCULATIONS

 Website: www.rheinzink.com E-mail: info@rheinzink.com	
INFORMATION AND DETAILS HEREIN ARE ONLY A BASELINE FOR SYSTEM DESIGN AND INSTALLATION. MODIFICATION TO MEET PROJECT REQUIREMENTS IS THE RESPONSIBILITY OF THE DESIGNER AND ARCHITECT. RHEINZINK AMERICA STAFF ARE AVAILABLE TO ASSIST THE DESIGNER AND ARCHITECT IN THIS PROCESS. RHEINZINK AMERICA MAKES NO REPRESENTATIONS AND WARRANTIES OTHER THAN THOSE EXPRESSED HEREIN.	
PROJECT:	INTERLOCKING TILE FACADE
DATE:	03-2012
DRAWING TITLE:	RECTANGULAR FABRICATION - V
SCALE:	N.T.S.
COPYRIGHT RESERVED. THIS DRAWING REMAINS THE PROPERTY OF RHEINZINK.	SHEET: ILTF-11d



NOTES:

1. RHEINZINK RECOMMENDS STAINLESS STEEL FASTENERS AND CLIPS.
2. CLIP QUANTITY AND SPACING TO BE DETERMINED BY ENGINEERING CALCULATIONS



Website: www.rheinzink.com E-mail: info@rheinzink.com

INFORMATION AND DETAILS HEREIN ARE ONLY A BASELINE FOR SYSTEM DESIGN AND INSTALLATION. MODIFICATION TO MEET PROJECT REQUIREMENTS IS THE RESPONSIBILITY OF THE DESIGNER AND ARCHITECT. RHEINZINK AMERICA STAFF ARE AVAILABLE TO ASSIST THE DESIGNER AND ARCHITECT IN THIS PROCESS. RHEINZINK AMERICA MAKES NO REPRESENTATIONS AND WARRANTIES OTHER THAN THOSE EXPRESSED HEREIN.

PROJECT:	INTERLOCKING TILE FACADE	DATE:	03-2012
DRAWING TITLE:	SQUARE FABRICATION DETAIL	SCALE:	N.T.S.
COPYRIGHT RESERVED. THIS DRAWING REMAINS THE PROPERTY OF RHEINZINK.		SHEET:	ILTF-12